



**THE RITZ-CARLTON
RESIDENCES**

DUBAI, CREEKSIDE



SKY
M A N S I O N

— FACT SHEET —

Keturah Resort is more than a destination, it is an awakening into a new experiential level of luxury, which brings with it the realization that the true measure of success is peace of mind, and our physical, mental and emotional wellbeing are part of this equation.

The Ritz-Carlton Residences located at Keturah Resort is the **FIRST FULLY WELLNESS CERTIFIED RESORT** in the MENA region.

It is one of the most prestigious and outstanding developments of Dubai. Meticulously designed, crafted and envisioned by the developer in pursuit of excellence. Over the past years careful planning, refining and perfecting of the design and craftsmanship has allowed Keturah Resort to mature to something never before seen in Dubai.

where

the weathth of wellbeing

resides



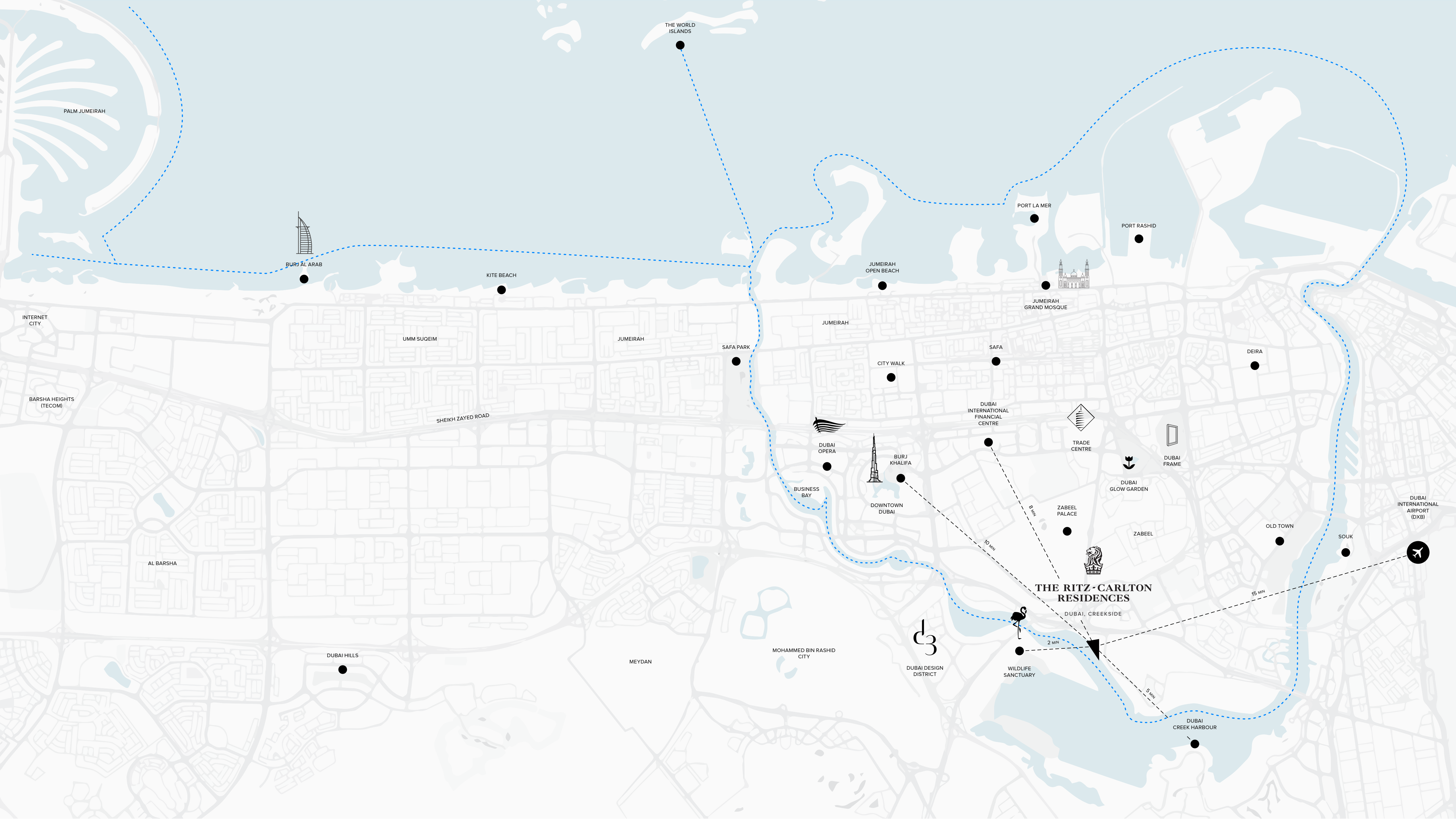
**THE RITZ - CARLTON
RESIDENCES**

DUBAI, CREEKSIDE

TABLE OF

Contents

- Location Map
 - Wind Study
 - Sun Study
- Master Plan
 - The Views
 - Waterfront Living
- Sky Mansion *'The Element of Inspiration'*
- Inspiration
- Concept Mood Board
- Concept Development
- The Facades Mood Board
- Facade Sketch
- 2D Illustration
 - 'North' & 'South' Facades
 - 'East' Facade
- Facade 3D Render
- Water Patio Inspiration
- The Interior (Selection)
- Brands' List
- Residential Wellness Design
- Delos™ Pathways to Health and Happiness
- Landscape Mood Board
- Landscape Concept
- Sky Mansion Designated Plots
- Floor Plans
- By the Numbers
 - General Information
 - Rooms Details / Floor
- Amenities and Facilities
- Residential and À La Carte Services
- Collaborations List



PALM JUMEIRAH

THE WORLD ISLANDS

BURJ AL ARAB

KITE BEACH

PORT LA MER

PORT RASHID

JUMEIRAH OPEN BEACH

JUMEIRAH GRAND MOSQUE

INTERNET CITY

UMM SUGEIM

JUMEIRAH

SAFA PARK

JUMEIRAH

CITY WALK

SAFA

DEIRA

BARSHA HEIGHTS (TECOM)

SHEIKH ZAYED ROAD

DUBAI OPERA

BURJ KHALIFA

DUBAI INTERNATIONAL FINANCIAL CENTRE

TRADE CENTRE

DUBAI FRAME

BUSINESS BAY

DOWNTOWN DUBAI

ZABEEL PALACE

DUBAI GLOW GARDEN

ZABEEL

OLD TOWN

DUBAI INTERNATIONAL AIRPORT (DXB)

AL BARSHA

DUBAI HILLS

MEYDAN

MOHAMMED BIN RASHID CITY

DUBAI DESIGN DISTRICT

WILDLIFE SANCTUARY

THE RITZ-CARLTON RESIDENCES
DUBAI, CREEKSIDE

SOUK

DUBAI CREEK HARBOUR

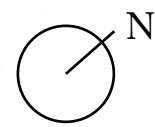
8 MIN

10 MIN

2 MIN

5 MIN

15 MIN

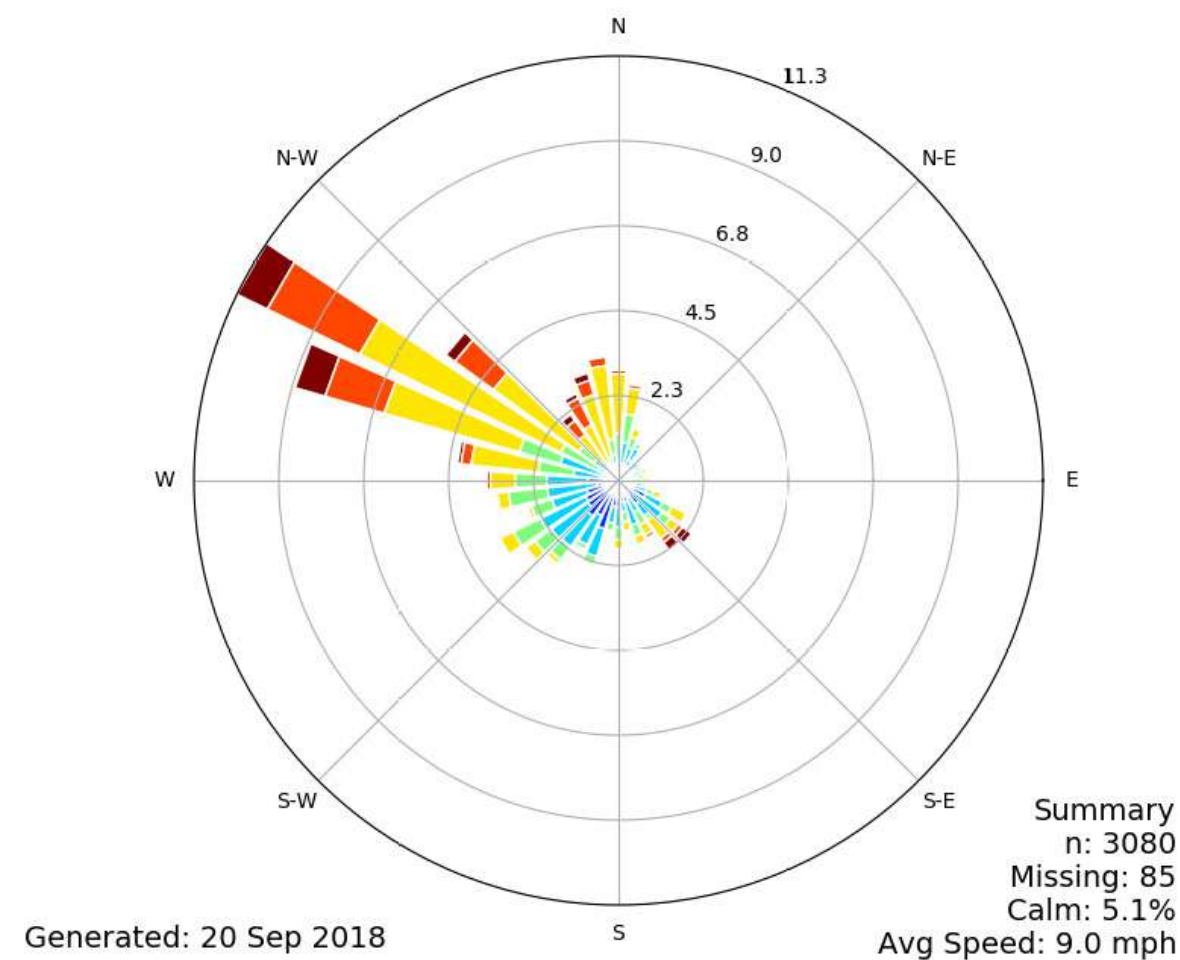


WELLNESS SITE ANALYSIS

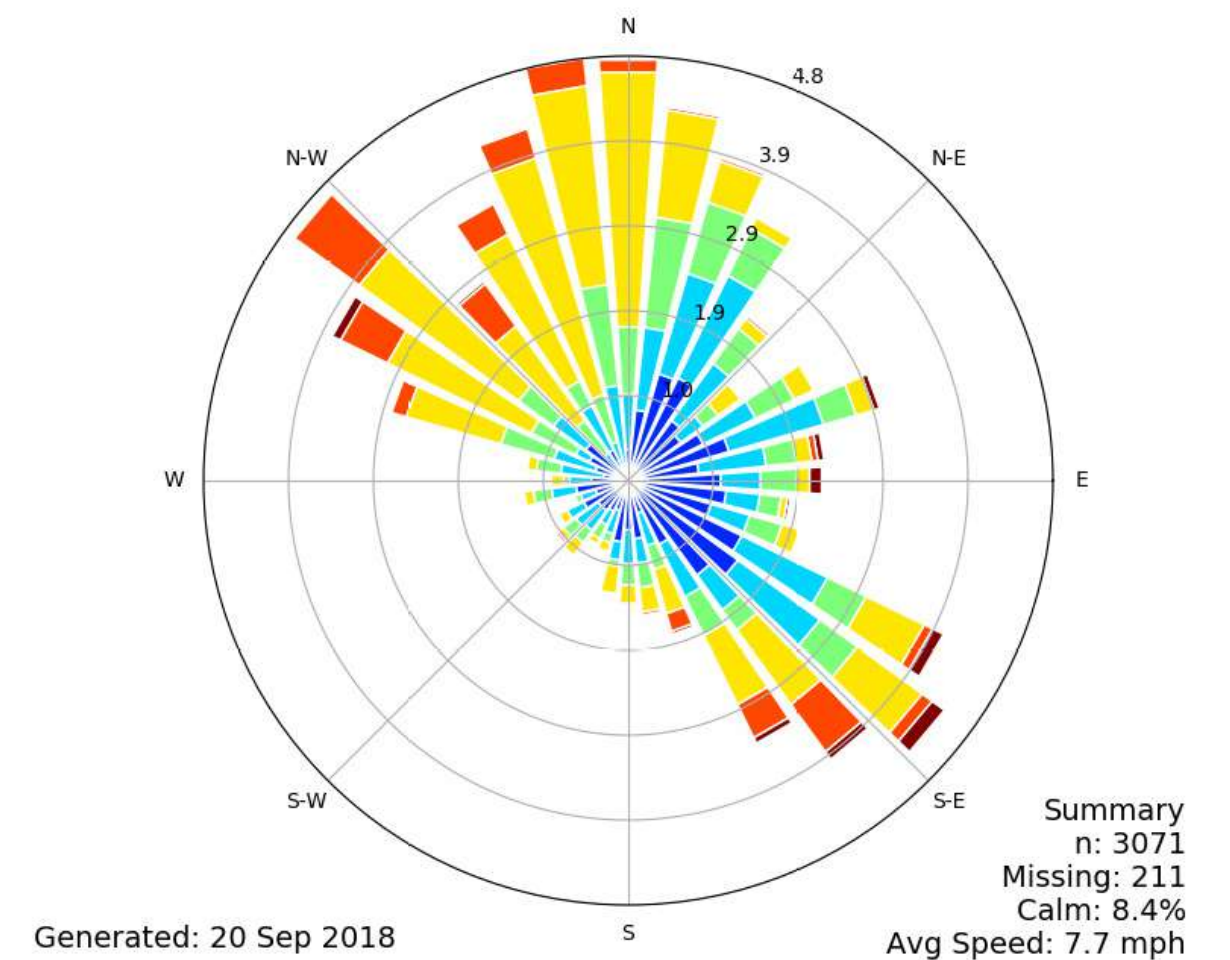
Wind Study

The wind is coming with most frequency and intensity from the Creek Side situated south from the site. The building volume is following the same direction so the air flows around most of the facades and blows the surface heating away.

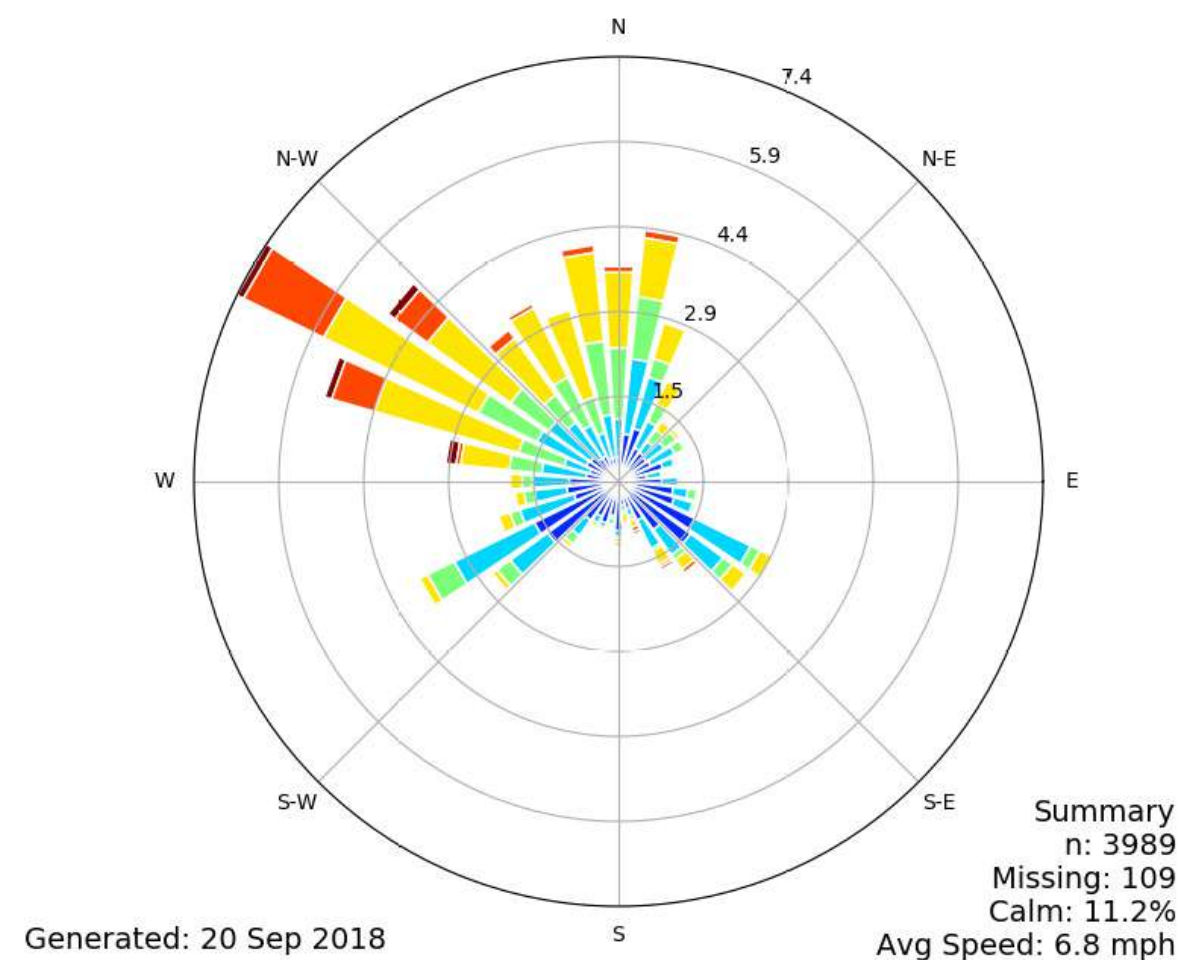
[QGX] AL DHAFRA
Windrose Plot [Time Domain: Jun,]
Period of Record: 07 Jun 2010 - 01 Jul 2015



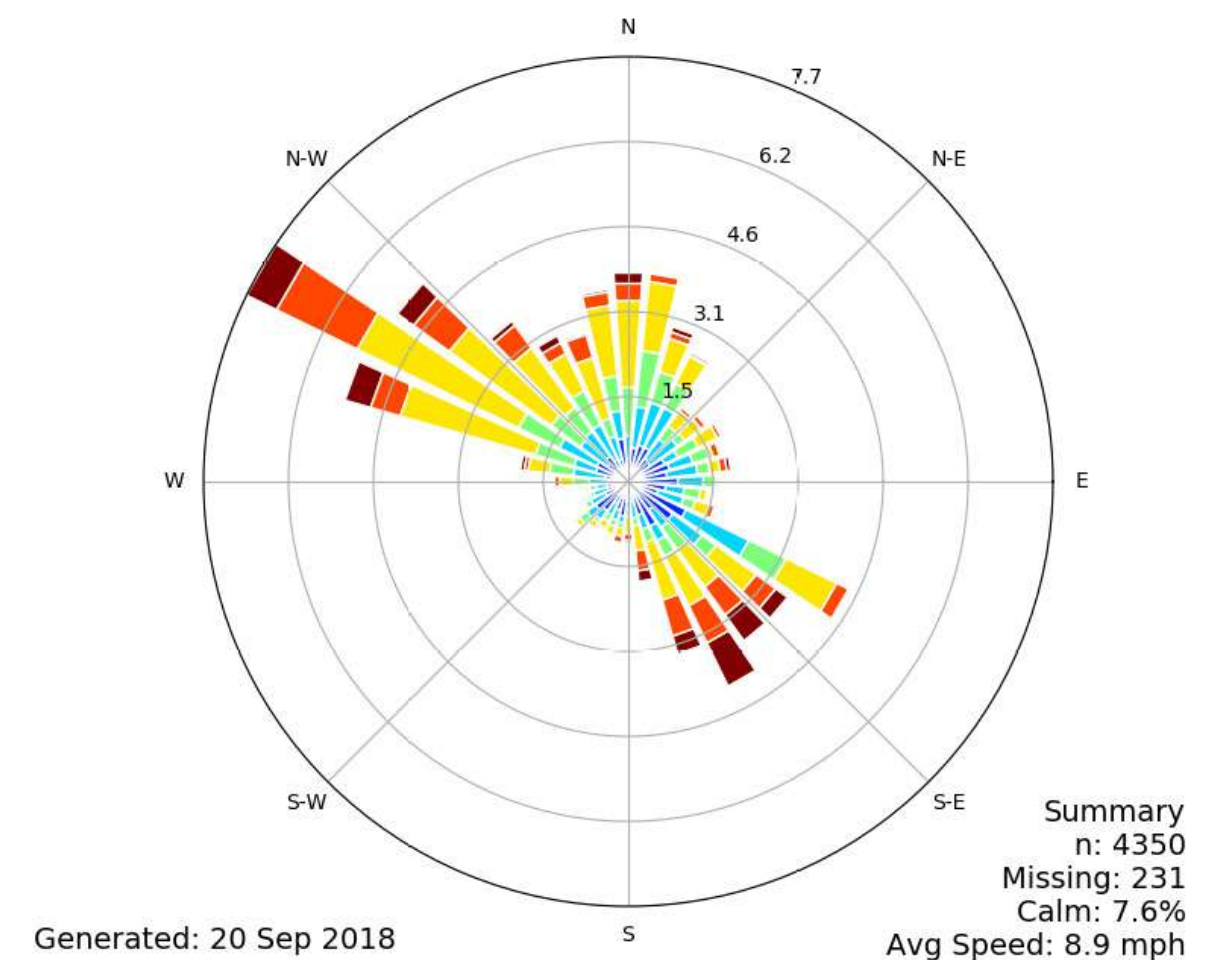
[QGX] AL DHAFRA
Windrose Plot [Time Domain: Sep,]
Period of Record: 01 Sep 2010 - 01 Oct 2015

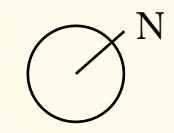


[QGX] AL DHAFRA
Windrose Plot [Time Domain: Dec,]
Period of Record: 02 Dec 2010 - 01 Jan 2016



[QGX] AL DHAFRA
Windrose Plot [Time Domain: Mar,]
Period of Record: 01 Mar 2011 - 31 Mar 2016





WELLNESS SITE ANALYSIS

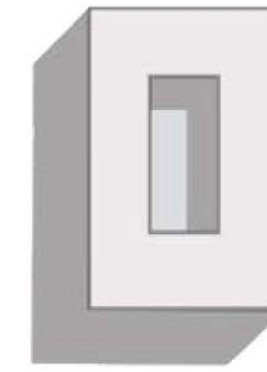
Sun Study

The sun behavior is carefully analyzed in its path, orientation and height, and the architecture is adjusted in order to allow most natural light without reaching overheating

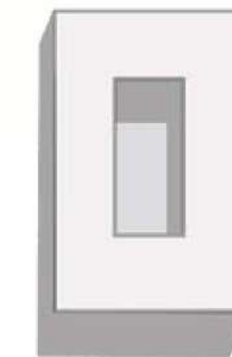
8 am

12 am

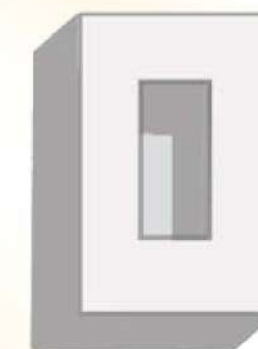
4 pm



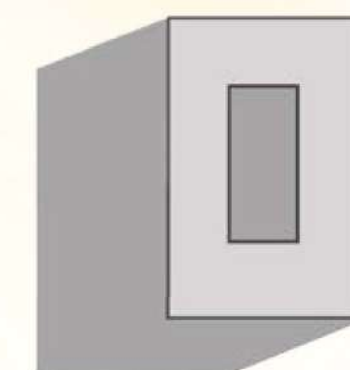
SPRING



SUMMER



AUTUMN



WINTER



SUNSET

SUNRISE



DOWNTOWN
DUBAI



WILDLIFE
SANCTUARY



CREEK
VIEW



DUBAI CREEK
HARBOUR



ONE-OF-A-KIND

Waterfront Living

Lapped by the gentle rhythms of turquoise waters, and sitting gracefully on the shores of the Dubai Creek, the Ritz-Carlton Residences offer more than waterfront living. The resort is a landmark of luxury, wellness and craftsmanship.

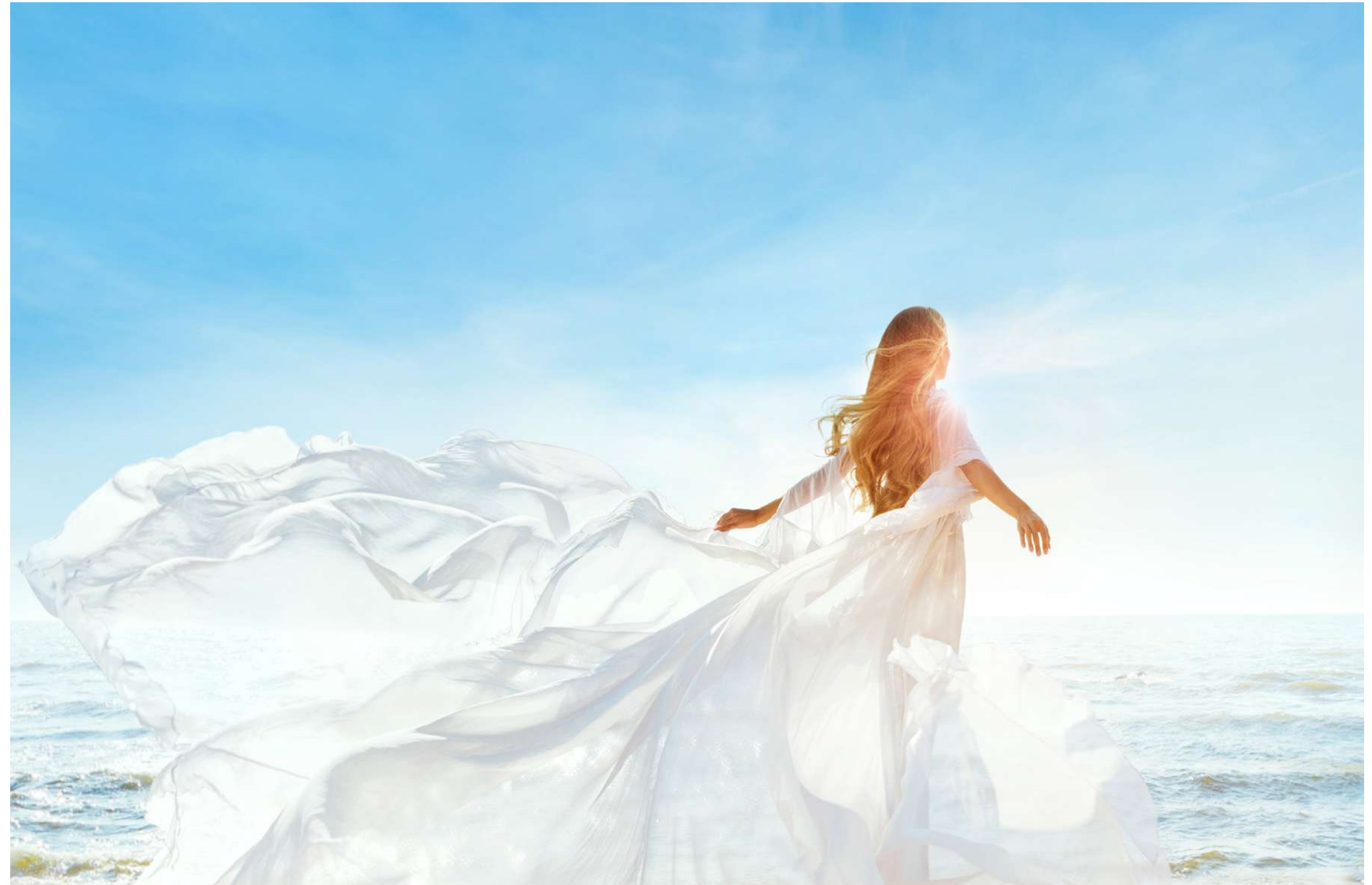
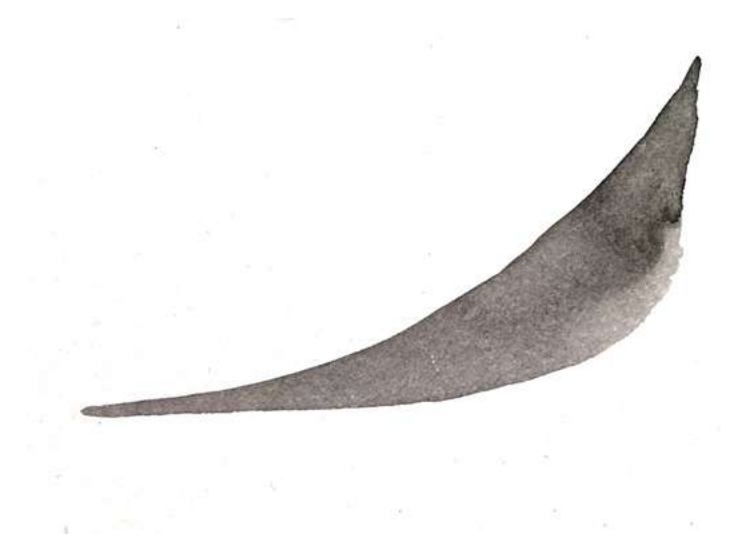
On the backdrop of the iconic Dubai skyline, the Ritz-Carlton Residences are nestled in the quiet natural beauty of Ras El Khor Nature Reserve, where breath-taking views of mangroves await, along with an air rich with naturally high levels of oxygen. The sanctuary allows you to become infused with wellness on all levels.

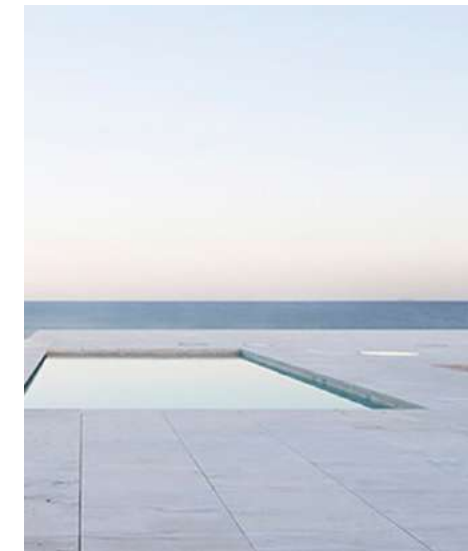
Offering a peaceful refuge from one of the most vibrant and forward thinking cities in the world, you can conveniently reach the vibrant downtown area (4.5 km) within minutes by car, boat or via the boardwalk with its running and biking trail.

THE ELEMENT OF

Inspiration

Sky is the element of intelligence, creativity, and beginnings.
Largely intangible and without permanent form.





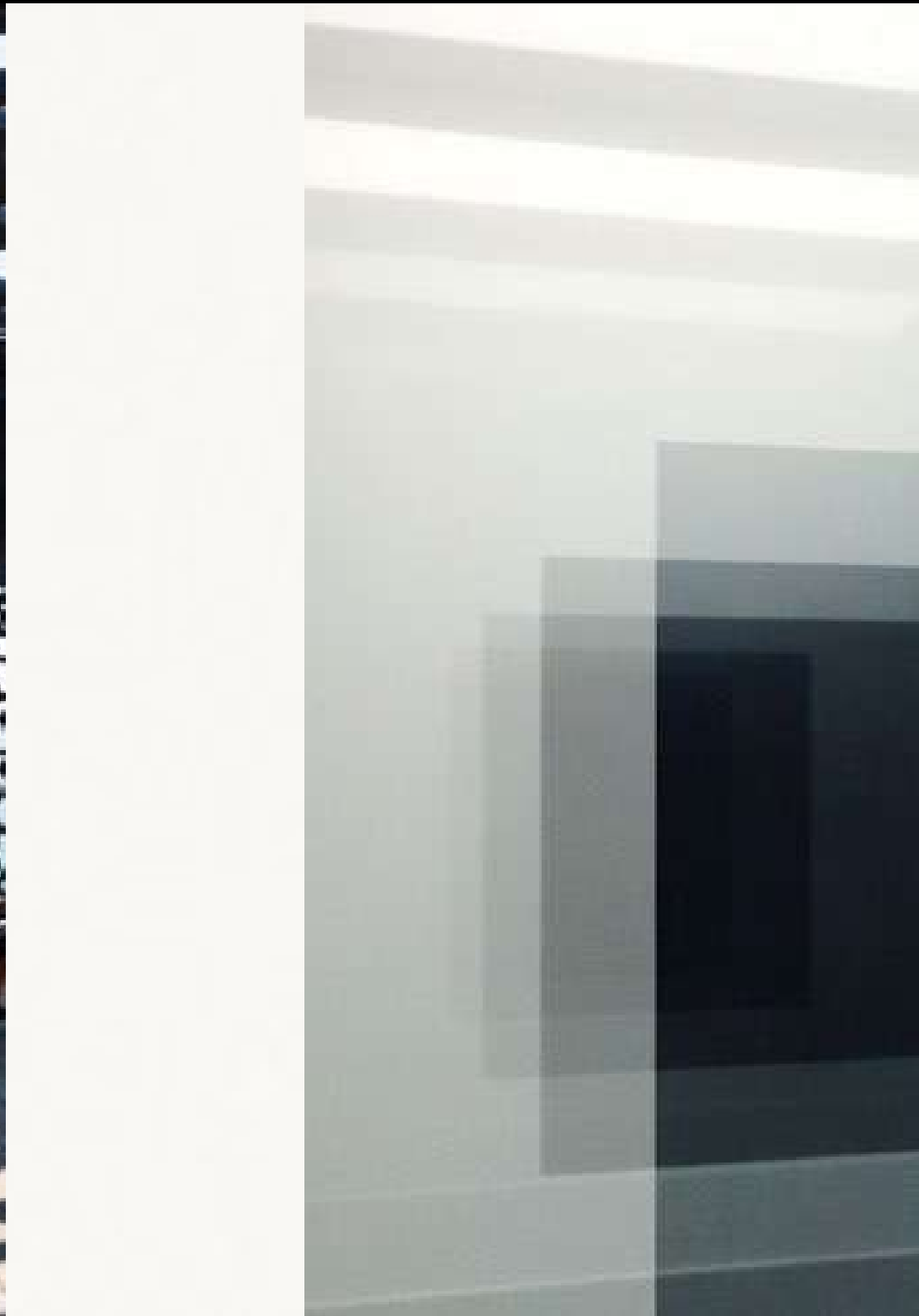
Inspiration

The Sky Mansion is a unique waterfront project with stunning panoramic views that overlook the Dubai Creekside, the Ras Al Khor Wildlife Sanctuary, and Downtown Dubai.

Architecture and the environment combine seamlessly to create a tranquil and replenishing atmosphere throughout the home.

Concept

MOOD BOARD



GALAXY

PARADISE

BLUE

NIGHT/DAY

REFLECTION

CYCLE

LIGHT

REFINE

CONTINUITY

LAYER

DREAM

Concept

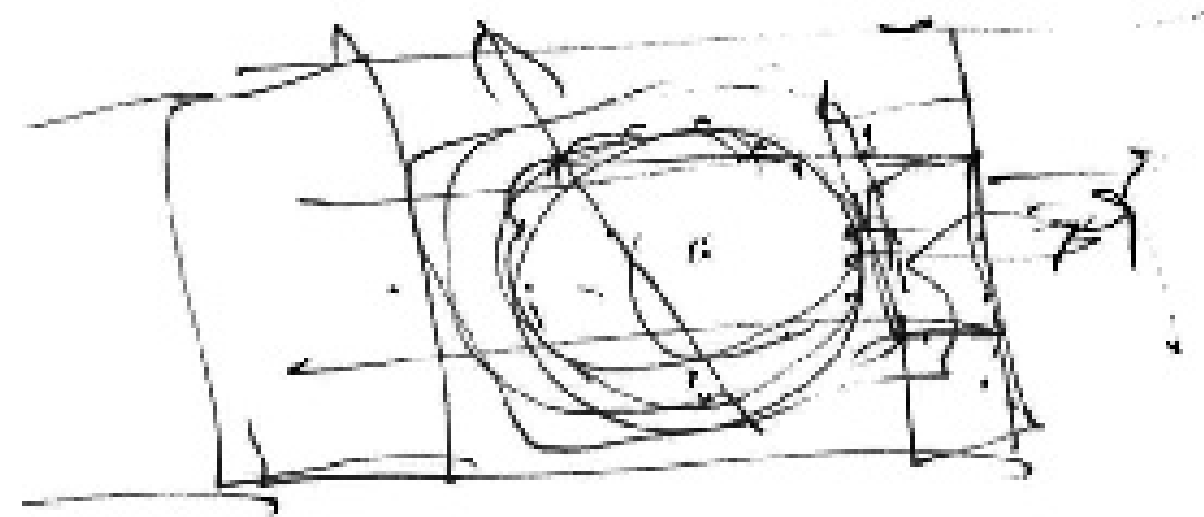
Fulfillment of what is called «use» to create «beauty»

Warm and pure mineral atmosphere

From raw lines through curves & continuity

From mineral spaces through sophistication & poetry

Create beauty to reach heaven



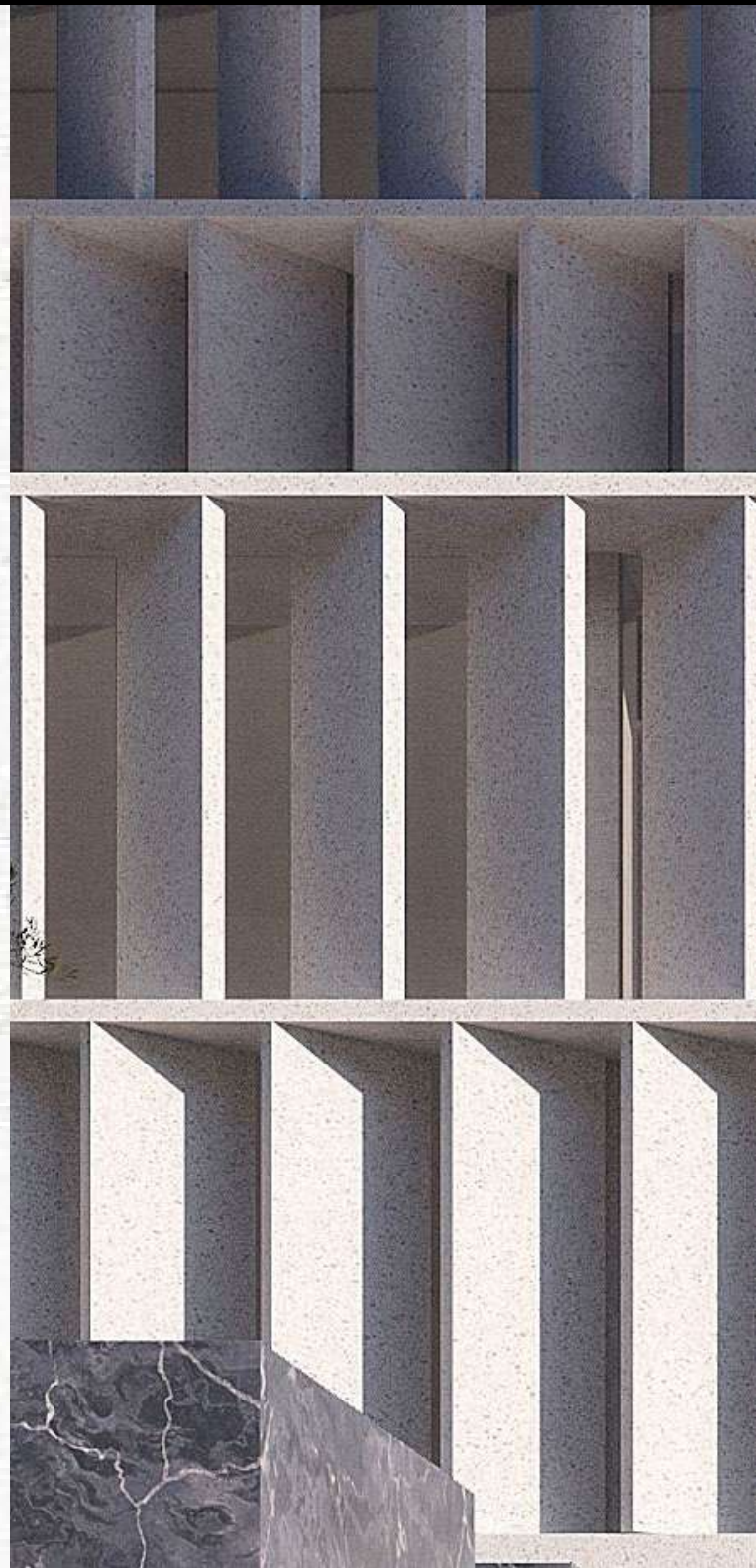
SEA AND SKY



SHAPE AND PRIVACY

The Facades

MOOD BOARD



FACADE

WHITE DOURA
STONE

FACADE

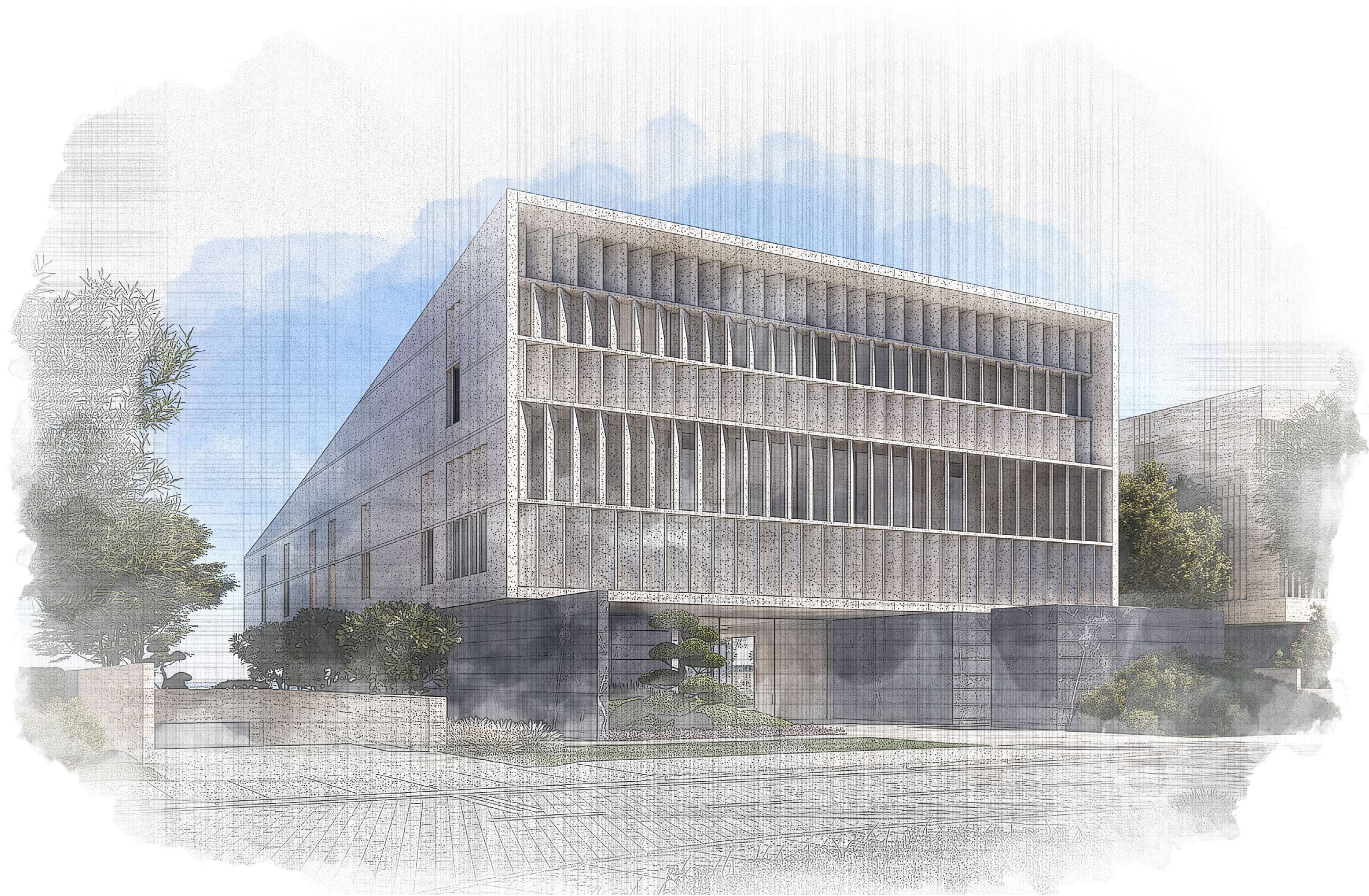
PACIFIC GREY
STONE

DETAILS

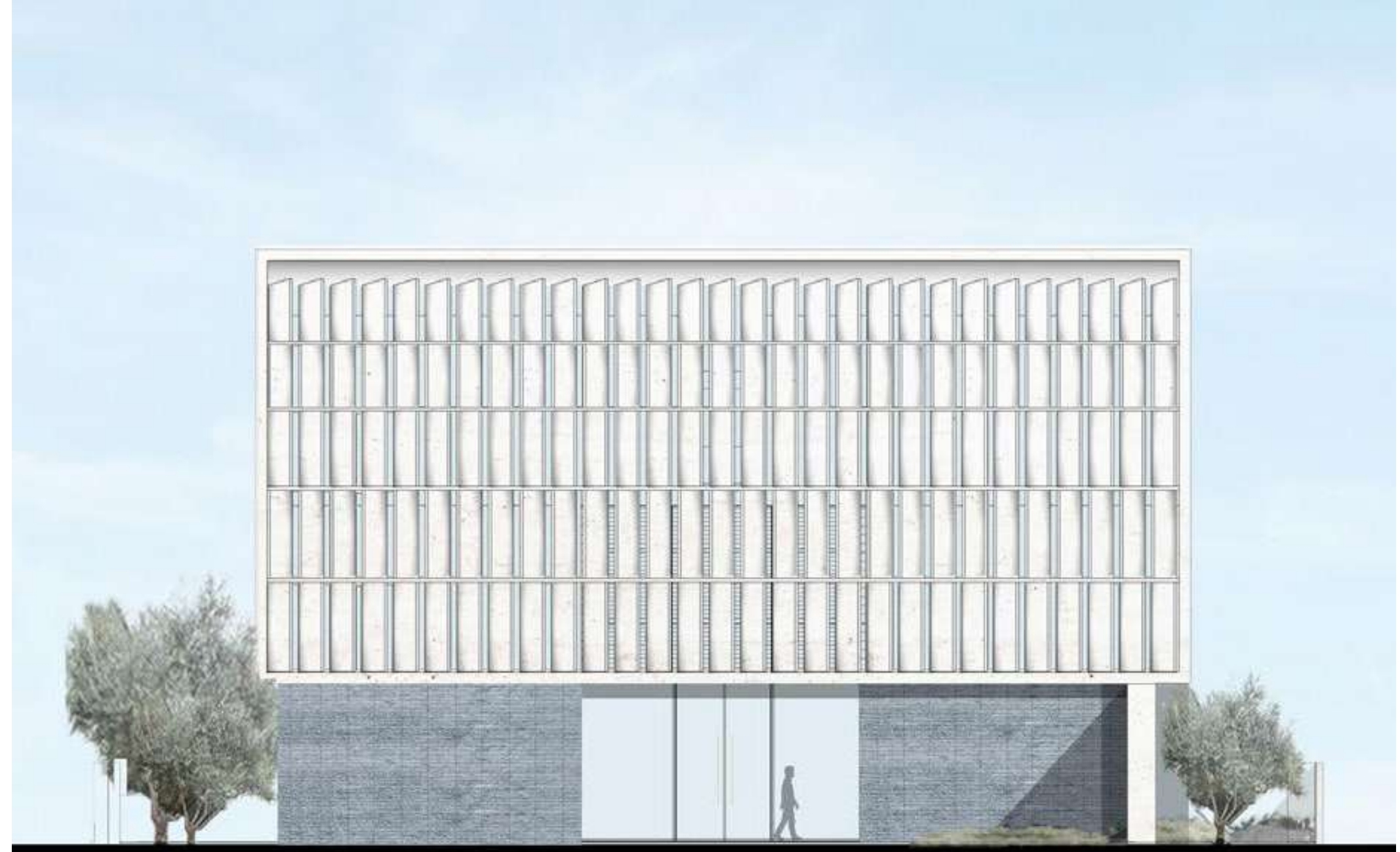
SLIDING
GLASS

DETAILS

MINERAL
ROOFTOP TERRACE



THE SOUTH
FACADE



THE NORTH
FACADE

The Facades

PURE MINIMALIST ARCHITECTURE

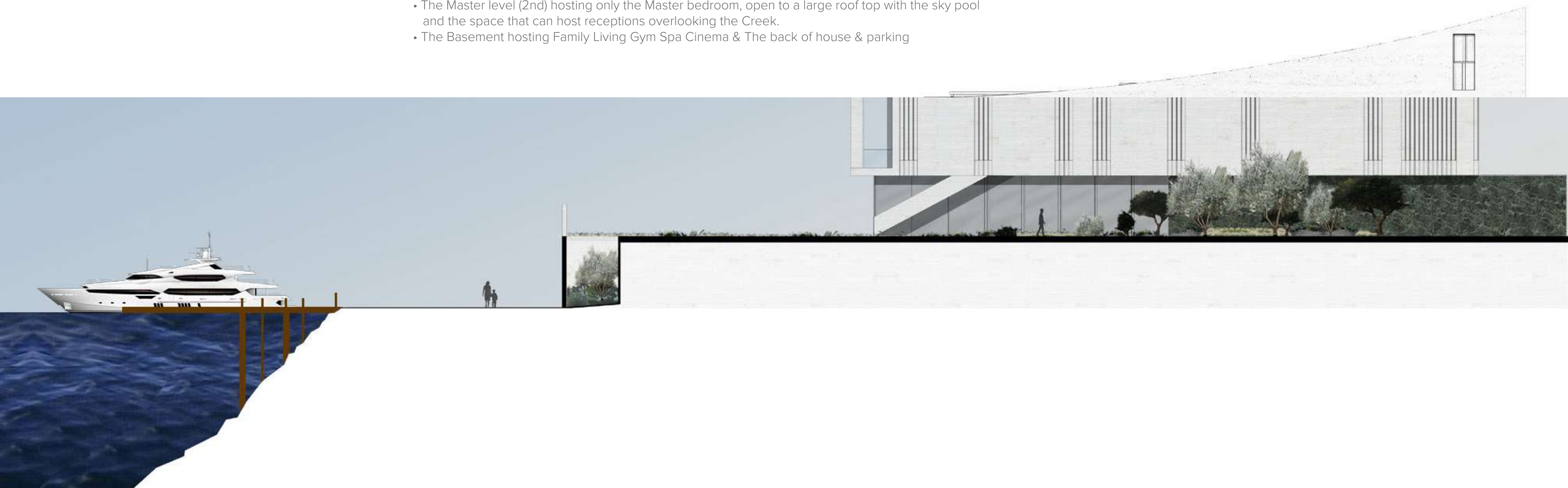
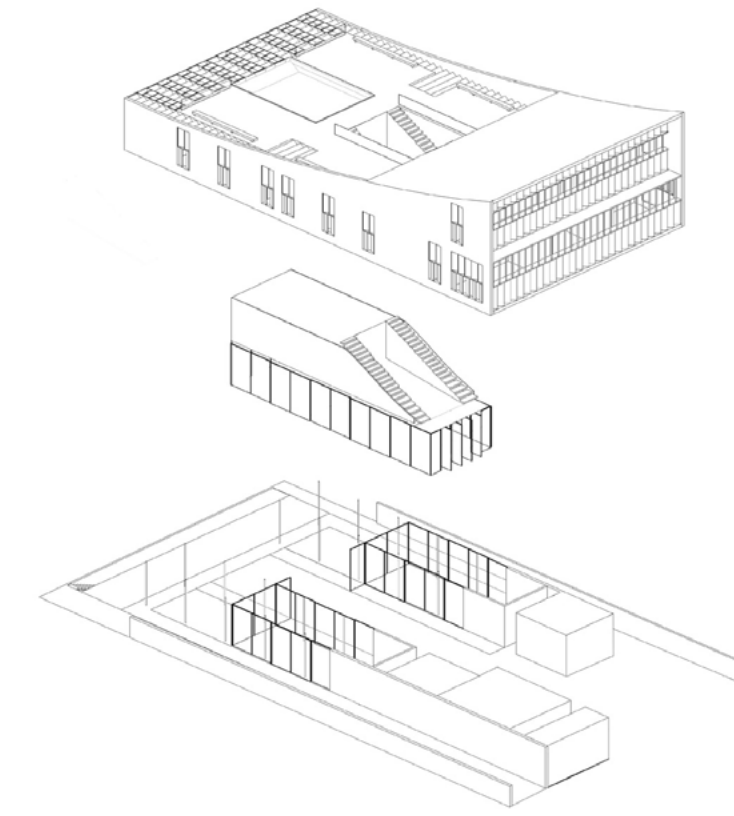
The Facades

THE EAST FACADE

The architectural design provide an ideal organization of the private, public and shared spaces, through pure and clean shaped volumes.

The project is divided into four different main spaces:

- The Living Level (GF) with the Main living/reception spaces
- The Family level (1ST) will allow a full privacy
- The Master level (2nd) hosting only the Master bedroom, open to a large roof top with the sky pool and the space that can host receptions overlooking the Creek.
- The Basement hosting Family Living Gym Spa Cinema & The back of house & parking

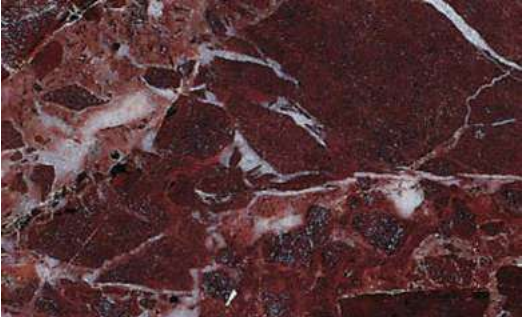




This drawing is an artistic interpretation of the design. It is not meant to be an exact rendition. Some items may not be standard and/or represent an exact symbol. Exact grading may differ.

The Interior

SELECTION



Interior decorations, furniture, and finishing are for demonstration purposes only. Final mansions will contain same or equivalent pieces.

Fabric

- Romo
- Casamance
- Rubelli
- Sahco
- Dedar
- Lelievre
- Pierre Frey

Aluminum

- Reynaers
- Gutmann
- Schueco
- Vitrocsa

Wardrobe

- Poliform
- Molteni
- Rimadesio
- Tisettanta

Indoor Furniture

- Giorgetti
- Molteni
- Poliform
- Flexform
- Minotti
- B&B Italia
- Maxalto
- Gubi
- Meridiani
- Cassina
- Ceccotti Collezioni
- Henge
- Porada
- Galloti & Radice
- Baxter Furniture

Outdoor Furniture

- Paola Lenti
- Varaschin
- Kettal
- Dedon
- Tribù
- Gervasoni
- Cassina

Decorative Lighting

- Baroncelli
- CTO Lighting
- Terzani
- Artemide
- Fontana Arte
- Barovier & Toso
- Foscarini
- Studio Italia Design
- Penta
- Patrizia Garganti
- DelightFULL
- Andromeda International
- Jean-Michel Othoniel
- Viabizzuno
- Frederik Molenschot

Non-Decorative Lighting

- Viabizzuno
- Iguzzini
- Erco
- Delta Light
- Tragetti

Kitchen

- Poliform
- Dada
- Poggenpohl
- Effeti
- Ernestomeda
- Gullo Luxury Kitchen
- Rossana Kitchen

Kitchen Equipment

- Gaggenau
- Miele Professional
- Sub-zero & Wolf

Sanitary Ware

- Gessi
- Ritmonio
- Zucchetti
- Agape
- Antonio Lupi
- Ceramica Flaminia
- TOTO



Residential Wellness Design

DELOS WELLNESS SOLUTIONS

The world is increasingly more fast-paced, with constant connectivity resulting in a data overload and our nervous systems being continually over stimulated. The necessity to counter balance the intensity of our daily lives is more prevalent than ever.

Every aspect of The Residences interior environment designed in collaboration with Wellness Real Estate pioneer Delos using the world's leaders in wellness science; the expertise from the Mayo Clinic, Columbia University and Cleveland Clinic to create intimate spaces that heal, restore and nourish from within, to create the region's first WELL Certified™ private residences.

Wellness is reached though many elements, so when the focus is on what we breath, see, hear and feel, a home can be created with the power to support body and mind.

From lighting based on circadian rhythms, to carefully balanced spaces, exceptional water quality and the world's purest air, every residence is a haven of multi-dimensional wellness science in action.

Each of The Residence's interior features fully integrated smart wellness solutions by designed to harmonise the systems of the body with those of the home by bringing in precisely what the body needs and filtering out elements that may harm it.



“Delos is designing spaces to solve health problems before they’re created ... It will literally change the way we live.”

FORMER PRESIDENT BILL CLINTON
Clinton Global Initiative, 2014



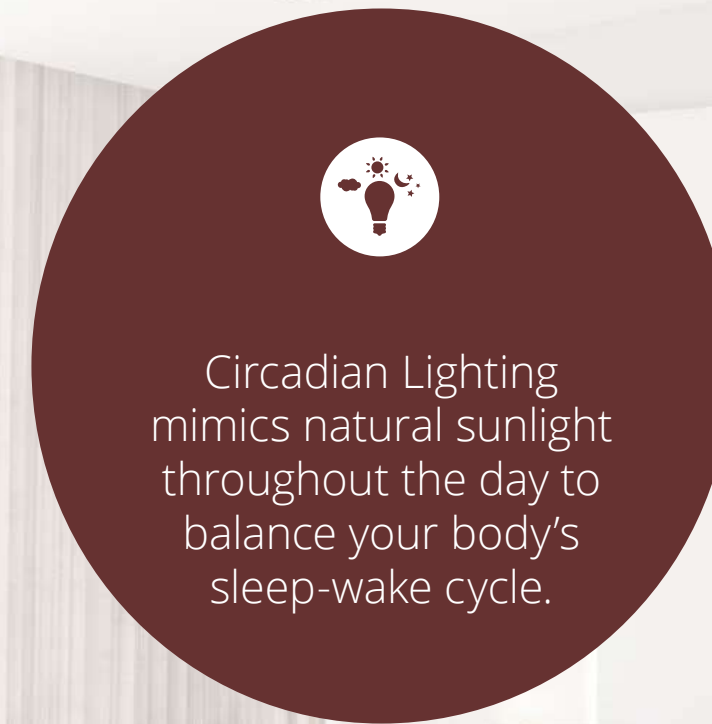
The DELOS™ Pathways to Health and Happiness.



Inspired by nature's sunrise, Dawn Simulation wakes you gradually and leaves you feeling refreshed.



Enjoy filtered water from the Water Purification system.



Circadian Lighting mimics natural sunlight throughout the day to balance your body's sleep-wake cycle.



As you settle in for the night, lower the Blackout Shades to enjoy a night of deep sleep. Night Lighting allows for safe navigation at night while minimizing sleep disruption.



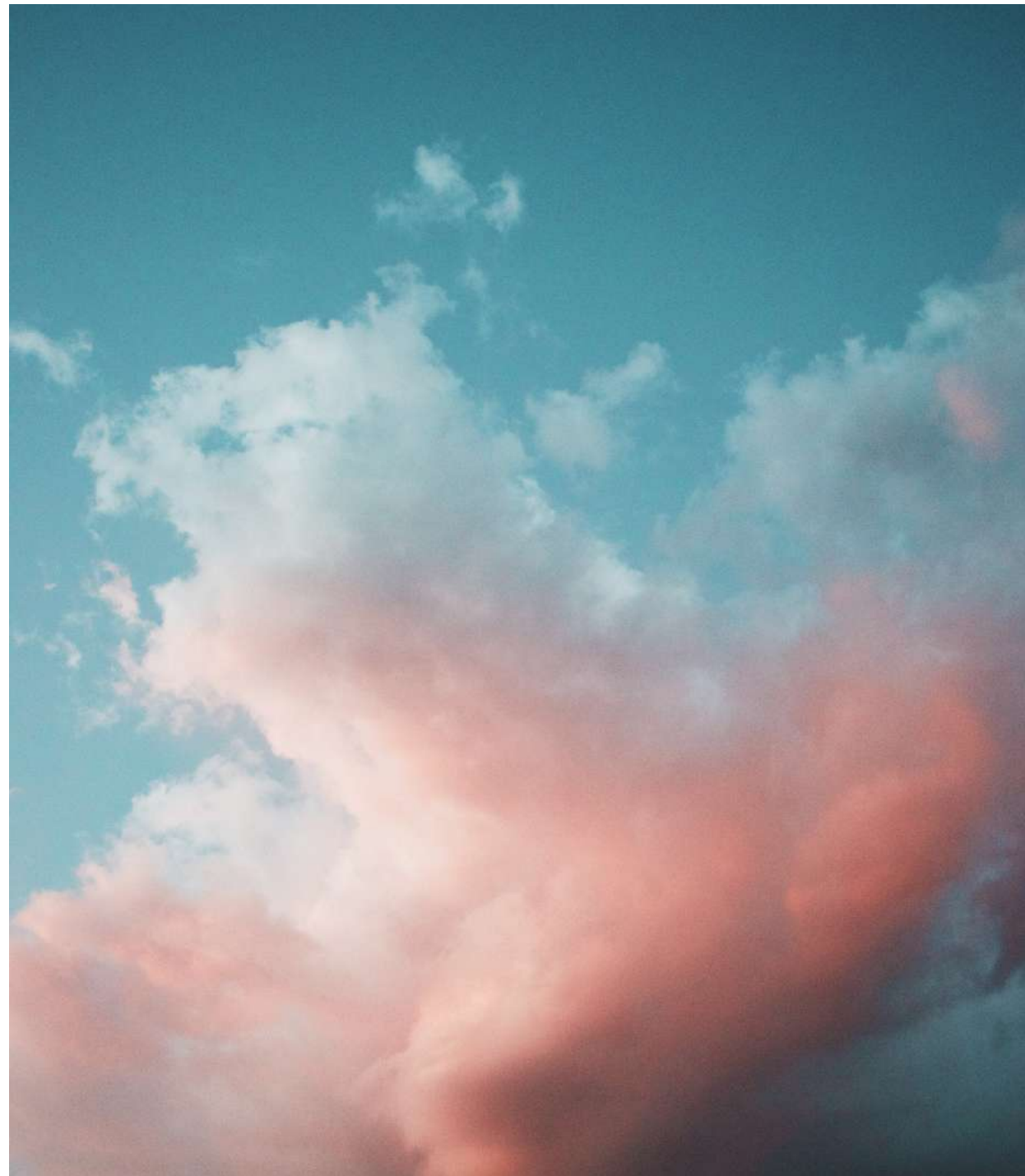
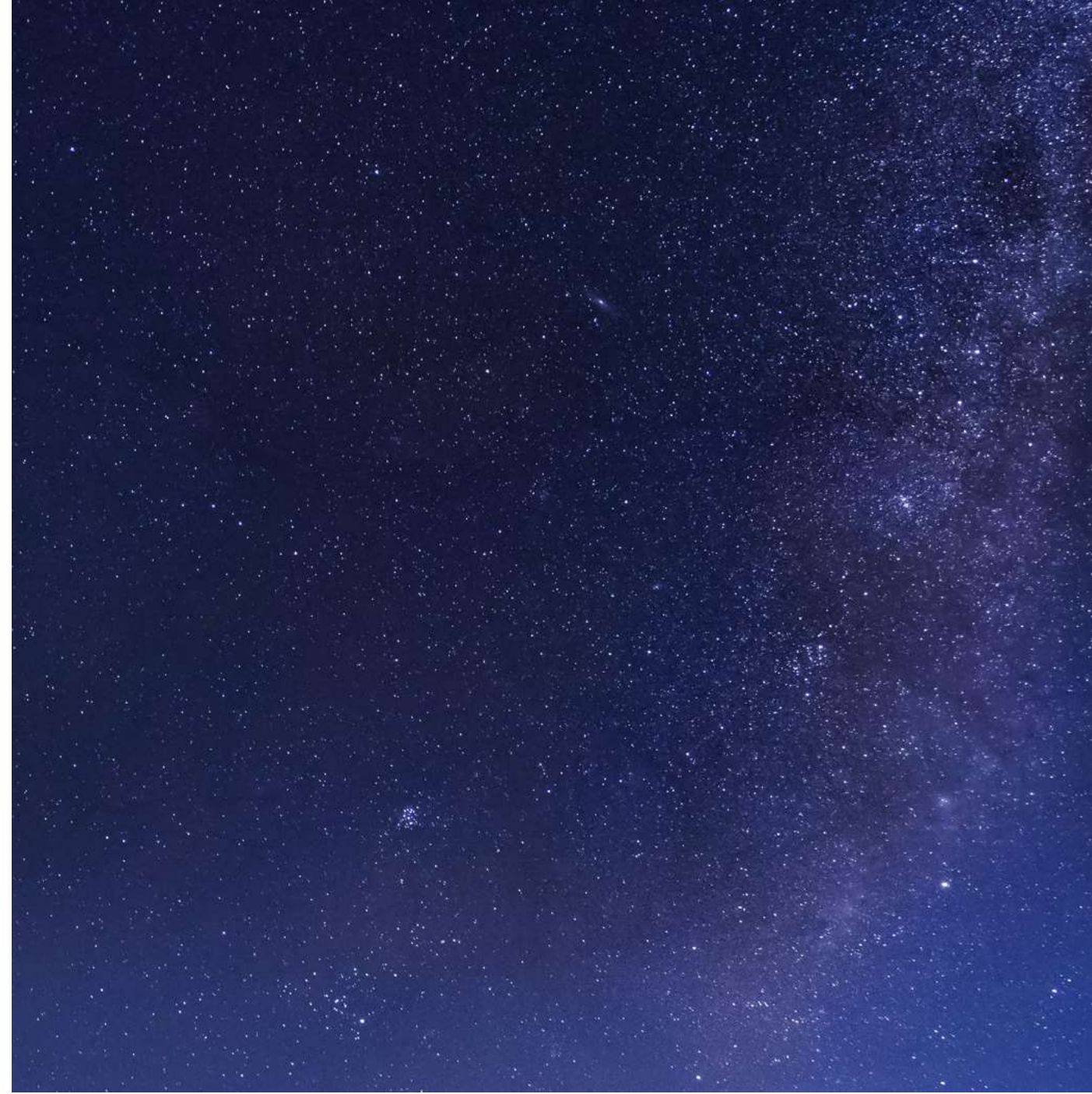
Experience the rejuvenating effects of the Energizing Light before you take your Shower, which will leave your skin and hair soft and smooth.



Throughout the day, the Air Purification system reduces allergens, toxins and smoke.



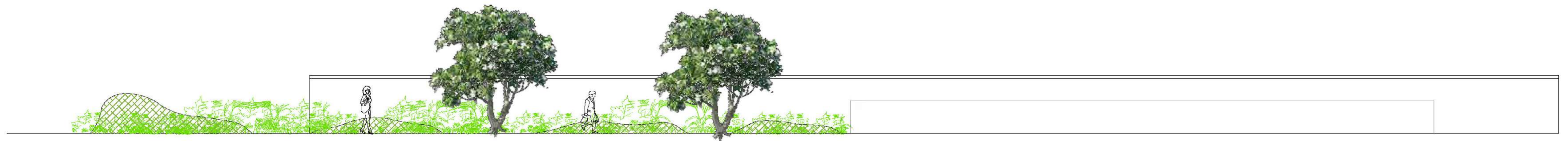
Unwind for the evening with Guided Meditation narrated by Deepak Chopra.



Landscape Concept

INSPIRATION

Landscape Concept



Elevation 02




Elevation 01



This drawing is an artistic interpretation of the design. It is not meant to be an exact rendition. Some items may not be standard and/or represent an exact symbol. Exact grading may differ.



The Ritz-Carlton Residences, Dubai, Creekside are not owned, developed or sold by The Ritz-Carlton Hotel Company, L.L.C. or its affiliates ("Ritz-Carlton"). MAG of Life FZ-LLC uses The Ritz-Carlton marks under a license from Ritz-Carlton, which has not confirmed the accuracy of any of the statements or representations made herein.

 All room sizes and floorplan measurements are approximate and may vary per unit. Floorplans and unit features are preliminary and proposed only. Developer reserves the right to modify, revise, change or withdraw any or all of same in its sole and absolute discretion and without prior notice. Depictions of furnishings, finishes, appliances, counters, soffits, floor coverings and other matters of detail, including, without limitation, items of finish and decoration are conceptual only and are not necessarily included in each Unit. Consult your Agreement and the Prospectus for items included with your Unit.

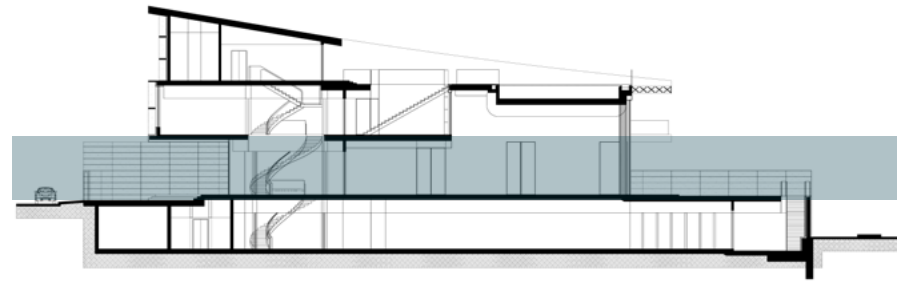


THE RITZ-CARLTON RESIDENCES

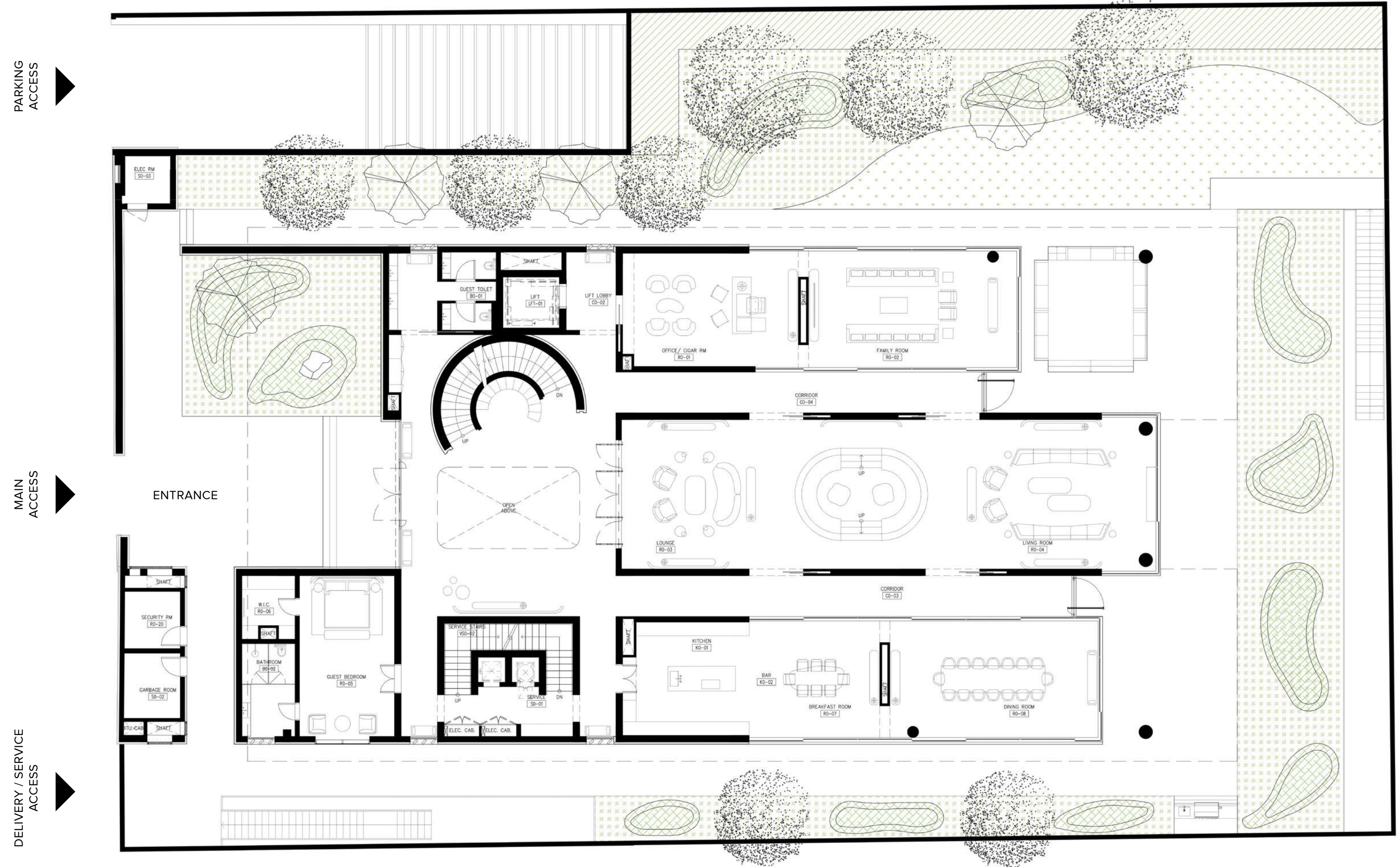
DUBAI, CREEKSIDE



Ground Floor



INTERIOR	716.00 SQ.M / 7,706.96 SQ.FT
EXTERIOR	194.39 SQ.M / 2,092.40 SQ.FT
SERVICES	21.37 SQ.M / 230.02 SQ.FT
TOTAL AREA	931.76 SQ.M / 10,029.38 SQ.FT



The Ritz-Carlton Residences, Dubai, Creekside are not owned, developed or sold by The Ritz-Carlton Hotel Company, L.L.C. or its affiliates ("Ritz-Carlton"). MAG of Life FZ-LLC uses The Ritz-Carlton marks under a license from Ritz-Carlton, which has not confirmed the accuracy of any of the statements or representations made herein.



All room sizes and floor plan measurements are approximate and may vary per unit. Floor plans and unit features are preliminary and proposed only. Developer reserves the right to modify, revise, change or withdraw any or all of same in its sole and absolute discretion and without prior notice. Depictions of furnishings, finishes, appliances, counters, soffits, floor coverings and other matters of detail, including, without limitation, items of finish and decoration are conceptual only and are not necessarily included in each Unit. Consult your Agreement and the Prospectus for items included with your Unit.

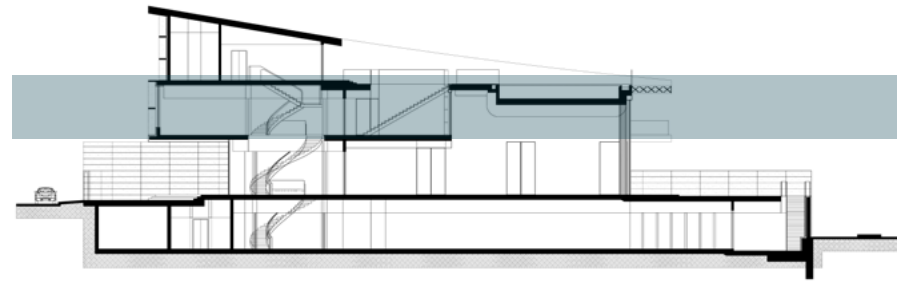


THE RITZ-CARLTON RESIDENCES

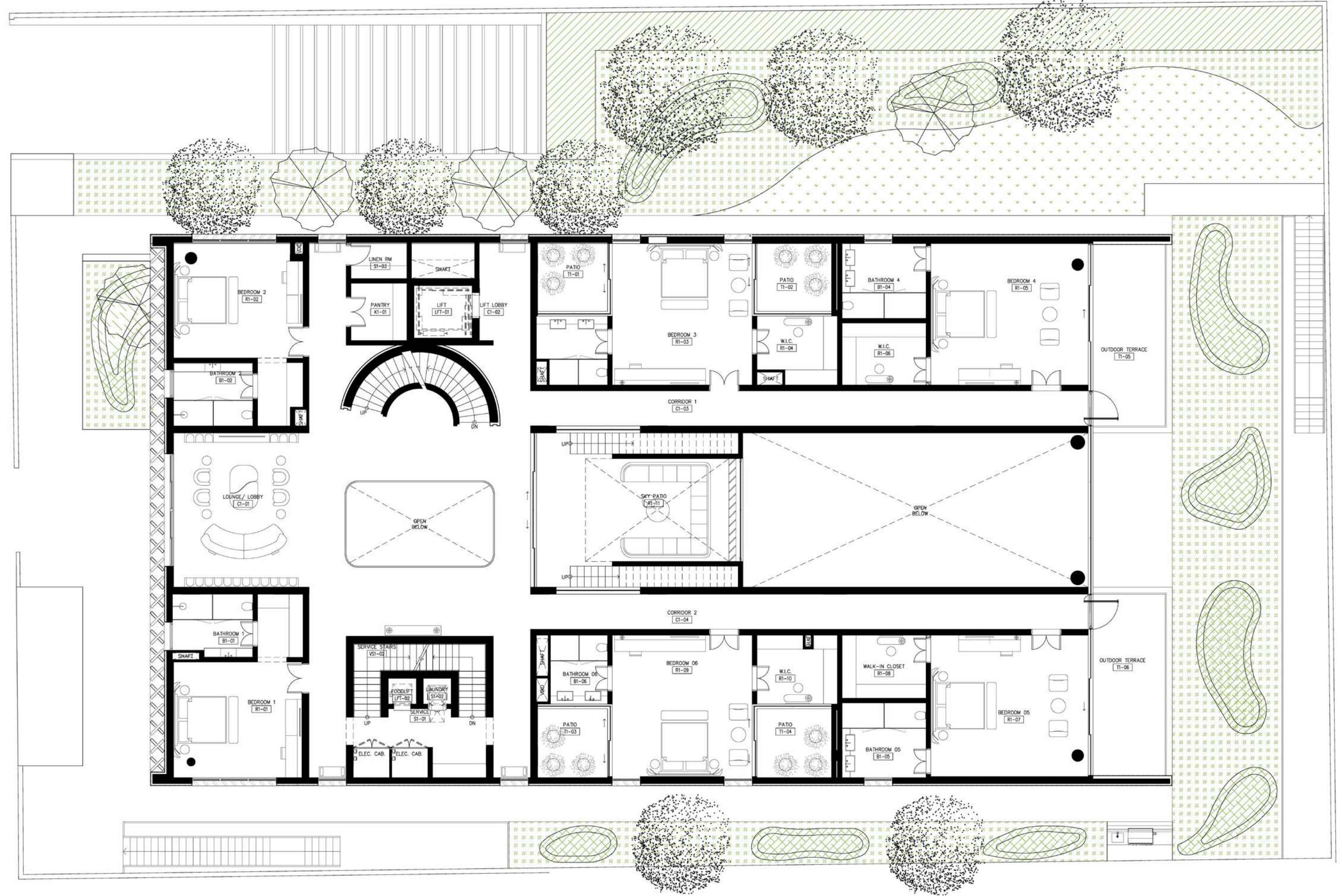
DUBAI, CREEKSIDE



First Floor



INTERIOR	663.14 SQ.M / 7,137.98 SQ.FT
EXTERIOR	45.20 SQ.M / 486.53 SQ.FT
SERVICES	45.06 SQ.M / 485.02 SQ.FT
TOTAL AREA	753.40 SQ.M / 8,109.53 SQ.FT



The Ritz-Carlton Residences, Dubai, Creekside are not owned, developed or sold by The Ritz-Carlton Hotel Company, L.L.C. or its affiliates ("Ritz-Carlton"). MAG of Life FZ-LLC uses The Ritz-Carlton marks under a license from Ritz-Carlton, which has not confirmed the accuracy of any of the statements or representations made herein.



All room sizes and floor plan measurements are approximate and may vary per unit. Floor plans and unit features are preliminary and proposed only. Developer reserves the right to modify, revise, change or withdraw any or all of same in its sole and absolute discretion and without prior notice. Depictions of furnishings, finishes, appliances, counters, soffits, floor coverings and other matters of detail, including, without limitation, items of finish and decoration are conceptual only and are not necessarily included in each Unit. Consult your Agreement and the Prospectus for items included with your Unit.

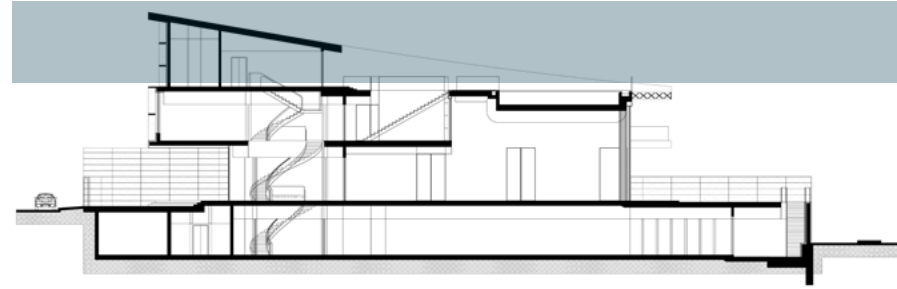


THE RITZ-CARLTON RESIDENCES

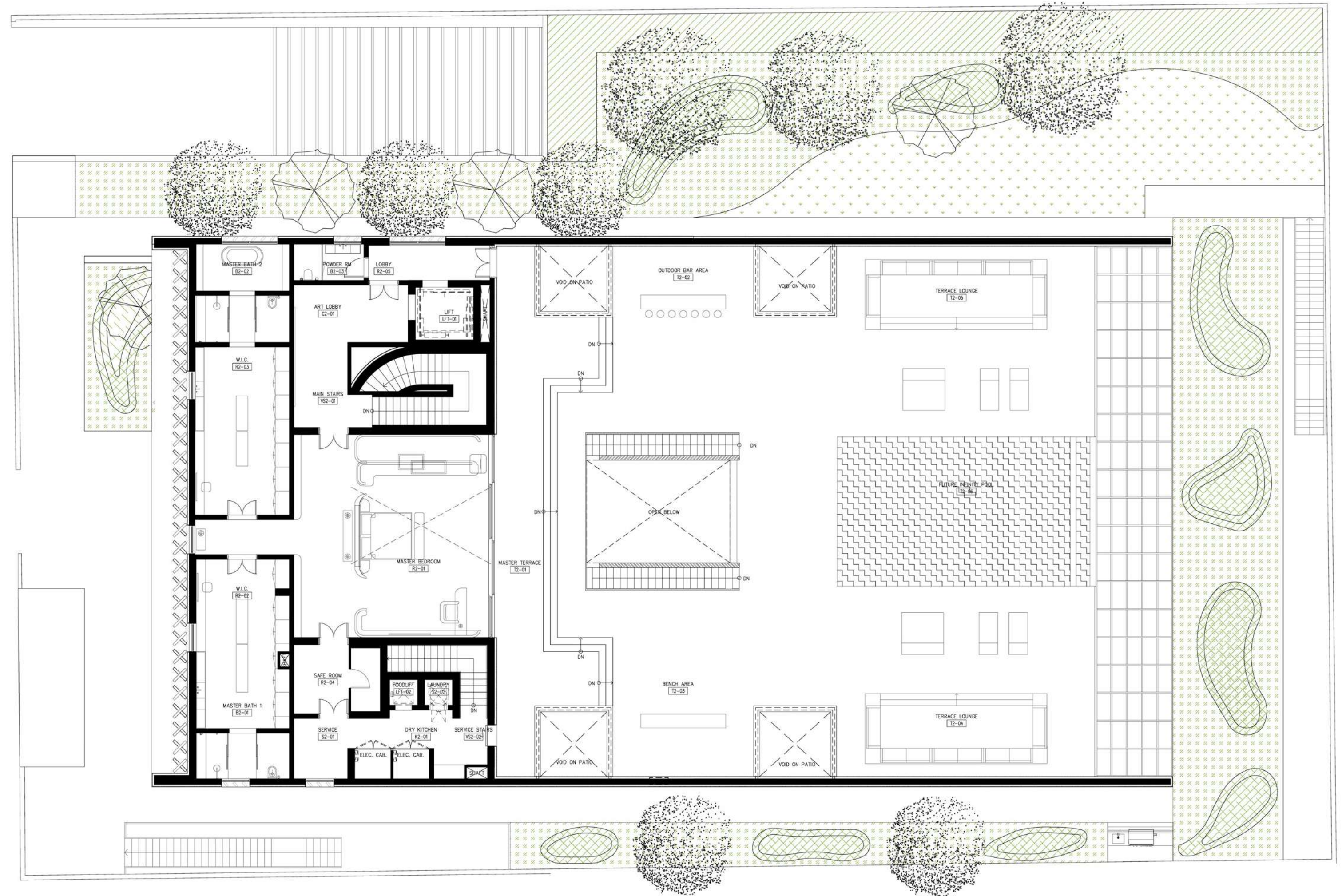
DUBAI, CREEKSIDE



Second Floor



INTERIOR	293.83 SQ.M / 3,162.76 SQ.FT
SKY GARDEN	527.35 SQ.M / 5,676.35 SQ.FT
TOTAL AREA	821.18 SQ.M / 8,839.11 SQ.FT



The Ritz-Carlton Residences, Dubai, Creekside are not owned, developed or sold by The Ritz-Carlton Hotel Company, L.L.C. or its affiliates ("Ritz-Carlton"). MAG of Life FZ-LLC uses The Ritz-Carlton marks under a license from Ritz-Carlton, which has not confirmed the accuracy of any of the statements or representations made herein.



All room sizes and floor plan measurements are approximate and may vary per unit. Floor plans and unit features are preliminary and proposed only. Developer reserves the right to modify, revise, change or withdraw any or all of same in its sole and absolute discretion and without prior notice. Depictions of furnishings, finishes, appliances, counters, soffits, floor coverings and other matters of detail, including, without limitation, items of finish and decoration are conceptual only and are not necessarily included in each Unit. Consult your Agreement and the Prospectus for items included with your Unit.

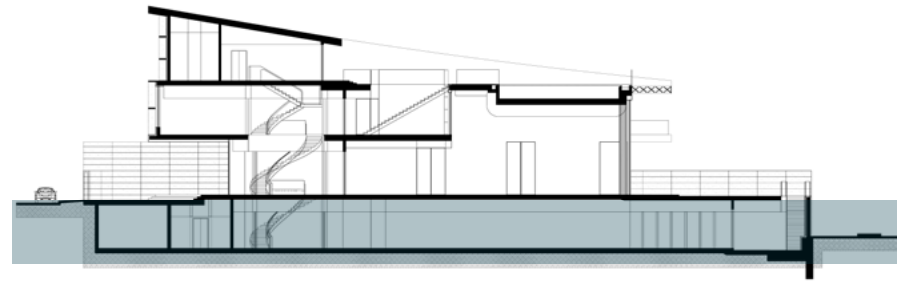


THE RITZ-CARLTON RESIDENCES

DUBAI, CREEKSIDE



Basement



INTERIOR	996.49 SQ.M / 10,726.13 SQ.FT
EXTERIOR	134.67 SQ.M / 1,449.57 SQ.FT
SERVICES	720.21 SQ.M / 7,752.28 SQ.FT
TOTAL AREA	1,851.37 SQ.M / 19,927.98 SQ.FT



The Ritz-Carlton Residences, Dubai, Creekside are not owned, developed or sold by The Ritz-Carlton Hotel Company, L.L.C. or its affiliates ("Ritz-Carlton"). MAG of Life FZ-LLC uses The Ritz-Carlton marks under a license from Ritz-Carlton, which has not confirmed the accuracy of any of the statements or representations made herein.

MAG OF LIFE All room sizes and floor plan measurements are approximate and may vary per unit. Floor plans and unit features are preliminary and proposed only. Developer reserves the right to modify, revise, change or withdraw any or all of same in its sole and absolute discretion and without prior notice. Depictions of furnishings, finishes, appliances, counters, soffits, floor coverings and other matters of detail, including, without limitation, items of finish and decoration are conceptual only and are not necessarily included in each Unit. Consult your Agreement and the Prospectus for items included with your Unit.

By the numbers



PLOT

PLOT AREA	2,088.05 - 2,618.03 SQ.M / 22,475.58 - 28,180.24 SQ.FT
PLOT NO.	A1 A4 A7 A10
NO. OF UNITS	4
NO. OF LEVELS	GROUND + 2 FLOORS & BASEMENT
OVERALL HEIGHT	16.16 M
LAYOUT	8 BEDROOMS + MAJILIS + 2 MAIDS' ROOMS + DRIVER ROOM + 12 BATHROOMS

MANSION


BUA

GROUND FLOOR	931.76 SQ.M / 10,029.38 SQ.FT
FIRST FLOOR	753.40 SQ.M / 8,109.53 SQ.FT
SECOND FLOOR	821.18 SQ.M / 8,839.11 SQ.FT
BASEMENT	1,851.37 SQ.M / 19,927.98 SQ.FT

TOTAL (BUA)

4,357.71 SQ.M / 46,906.00 SQ.FT

The Ritz-Carlton Residences, Dubai, Creekside are not owned, developed or sold by The Ritz-Carlton Hotel Company, L.L.C. or its affiliates ("Ritz-Carlton"). MAG of Life FZ-LLC uses The Ritz-Carlton marks under a license from Ritz-Carlton, which has not confirmed the accuracy of any of the statements or representations made herein.

 All room sizes and floorplan measurements are approximate and may vary per unit. Floorplans and unit features are preliminary and proposed only. Developer reserves the right to modify, revise, change or withdraw any or all of same in its sole and absolute discretion and without prior notice. Depictions of furnishings, finishes, appliances, counters, soffits, floor coverings and other matters of detail, including, without limitation, items of finish and decoration are conceptual only and are not necessarily included in each Unit. Consult your Agreement and the Prospectus for items included with your Unit.

By the numbers



GROUND FLOOR			FIRST FLOOR			SECOND FLOOR			BASEMENT		
	SQ.M	SQ.FT		SQ.M	SQ.FT		SQ.M	SQ.FT		SQ.M	SQ.FT
LOBBY	118.27	1,273.05	LOUNGE/ LOBBY	100.98	1,086.94	ART LOBBY	14.88	160.17	LOBBY	75.49	812.57
GUEST BATHROOM	17.10	184.06	BEDROOM 1	27.47	295.68	POWDER ROOM	4.65	50.05	SPA	64.08	689.75
GUEST ROOM	48.76	524.85	• WALK-IN-CLOSET	5.26	56.62	MASTER BEDROOM	73.51	791.25	CINEMA	46.55	501.06
OFFICE / CIGAR ROOM	39.17	421.62	• BATHROOM	9.17	98.70	• HER WALK-IN-CLOSET	29.15	313.77	FAMILY ROOM	78.41	844.00
FAMILY ROOM	47.04	506.33	BEDROOM 2	36.30	390.73	• HER BATHROOM	17.01	183.09	PLAY ROOM	59.88	644.54
LOUNGE	53.30	573.72	• WALK-IN-CLOSET	10.17	109.47	• HIS WALK-IN-CLOSET	29.00	312.15	GYM	57.25	616.23
LIVING ROOM	53.13	571.89	• BATHROOM	8.99	96.77	• HIS BATHROOM	7.80	83.96	TERRACE	90.37	972.73
DINNING ROOM	47.45	510.75	BEDROOM 3	40.83	439.49	SAFE	11.24	120.99	PATIO	135.50	1,458.51
BREAKFAST ROOM & KITCHEN	57.44	618.28	• WALK-IN-CLOSET	9.54	102.69	KITCHINET / SEVICE	21.49	231.32	DINNING	67.64	728.07
EXTERIOR LOUNGE	133.20	1,433.75	• BATHROOM	11.52	124.00	MASTER TERRACE	115.71	1,245.49	WINE CELLAR	16.80	180.83
ZEN GARDEN	51.25	551.65	BEDROOM 4	40.83	439.49	INFINITY POOL	71.03	764.56	KITCHEN	72.36	778.88
			• WALK-IN-CLOSET	9.71	104.52				MAIDS' QUARTERS	90.58	974.99
			• BATHROOM	11.51	123.89				DRIVERS' QUARTERS	34.60	372.43
			BEDROOM 5	36.89	397.08						
			• WALK-IN-CLOSET	10.17	109.47						
			• BATHROOM	7.22	77.72						
			BEDROOM 6	27.22	292.99						
			• WALK-IN-CLOSET	5.65	60.82						
			• BATHROOM	9.31	100.21						
			TERRACE	50.70	545.73						
						POOL DIMENSIONS	11.1 X 6.4 X 1.2 DEPTH				
FLOOR TO CEILING HEIGHT	4.7M (4.0M TO FALSE CEILING)		FLOOR TO CEILING HEIGHT	4.5M (3.8M TO FALSE CEILING)		FLOOR TO CEILING HEIGHT	3.7M (3.0M TO FALSE CEILING)		FLOOR TO CEILING HEIGHT	3.8M (3.0M TO FALSE CEILING)	

The Ritz-Carlton Residences, Dubai, Creekside are not owned, developed or sold by The Ritz-Carlton Hotel Company, L.L.C. or its affiliates ("Ritz-Carlton"). MAG of Life FZ-LLC uses The Ritz-Carlton marks under a license from Ritz-Carlton, which has not confirmed the accuracy of any of the statements or representations made herein.

MAG OF LIFE All room sizes and floorplan measurements are approximate and may vary per unit. Floorplans and unit features are preliminary and proposed only. Developer reserves the right to modify, revise, change or withdraw any or all of same in its sole and absolute discretion and without prior notice. Depictions of furnishings, finishes, appliances, counters, soffits, floor coverings and other matters of detail, including, without limitation, items of finish and decoration are conceptual only and are not necessarily included in each Unit. Consult your Agreement and the Prospectus for items included with your Unit.

Amenities And Facilities

- Luxury Wellness Hotel
- Private Boat Dock For Up To 120ft. Yachts
- Eight Sustainable and Organic-Focused Retail Spaces, Including Weekend Farmers' Market
- 24/7 Secured Private Parking with Valet
- Gated Community with Unique Views on the Wildlife Sanctuary
- Beach Access to The Ritz-Carlton Jumeirah Hotel
- Unique Access to One of Dubai's Most Recognized Private School: Swiss International Scientific School

- Wellness Center
Rejuvenation and Detox Facilities
Full Floor of Fitness Gear
Multiple Yoga Rooms
Indoor Pools

- Members' Only Resort Clubhouse
Over Three Michelin-Star Fusion,
& Healthy-Cuisine Restaurants

- The Residences Indoor & Outdoor
Business Club Facilities
Members' Only Welcoming Lounge Area
Breakfast & All-Day Dining Restaurant
Health Bar
Board Room / Meeting Room
Event / Party Hall
Cinema / Media / Games Room
Indoor Pools

- The Residences Indoor & Outdoor Kids Club
Multi-Purpose Rooms: Party, Classroom, Yoga,...
Technology Rooms: Science, Coding,...
Play Zones: Lego, Climbing, Baby Play
Kitchen For Cooking Classes
Organic Plants Garden

- Residential Neighborhood Park
Adults Residential Pool, and its Deck
Kids Large Outdoor Park & Splash Pool
Yoga Platform

Residential Services

Included In Your Service Charges

- Move-In Coordination
- Concierge Service
- Butler/Doorman/Porter Services
- Valet Parking 24/7 in Exclusive Basement Parking for Residents & Visitors
- Airline / Private Air Reservations
- Airport / Ground Transportation Arrangements
- Automobile Rental Reservations
- Limousine Reservations, incl. Rolls-Royce
- Business Center Services
- Coordinate Delivery Services
- Hotel Reservations
- Reserving Golf Tee Times
- Theater & Entertainment Information
- Ordering Floral Arrangements
- City Activity Arrangements
- Common Area Housekeeping
- Loss Prevention



**THE RITZ-CARLTON
RESIDENCES**

DUBAI, CREEKSIDE

À La Carte Services

General

- Pre-arrival Grocery Shopping
- Laundry/Dry Cleaning
- Alterations Services
- Car Washing/Detailing
- Equipment Rental & Arrangements
- Secretarial Services
- Function/Event Planning
- Mail Packing & Shipping
- Plant Care Maintenance
- Translation Services
- Nanny/Child Care Services
- Pet Grooming
- Vacant Home Care Inspections
- Owner Absentee Program
- Sommelier
- Notary Public Service

Academics

- Swiss International Scientific School
- Bilingual, Private Boarding School
- Exclusive Scholarship
- Preferential Rate
- Guaranteed Entry for your children

Lifestyle

- Exclusive Access to Resort Exotic Car Fleet
- Exclusive Access to Resort Private Yachts
- Preferential Rate on Resort Hotel Stays for your guests
- Michelin-Star Fine Dining
- Healthy-Cuisine Restaurants
- In-Residence Dining and Catering by the Chef himself

Engineering And Housekeeping

Day-to-Day Maintenance Coordination by The Ritz-Carlton

- Furniture Assembly
- Bulk/Move-in Trash Removal
- Picture Hanging
- Minor Electrical & Plumbing
- HVAC Filter Vacuum & Mop Floors
- Dust Interior
- Strip Beds & Change Sheets
- Clean Patio

The Concierge and Management staff can assist you with the services listed on this page. Please note that some of these services are À La Carte Services and performed by third parties. Conditions and charges apply to À La Carte Services.

Collaborations & Experiences

OWNER AND DEVELOPER



MAG of Life, the Wellness Real Estate division of MAG Group and driving force behind the KETURAH Resort. With current project estimates of over US\$ 1 billion, the company focuses on developing and delivering high-quality projects that provide long-term benefits to both investors and customers. MAG of Life, spearheads the MAG Group's drive to the forefront of the real estate industry thanks to projects imbued with the company's philosophy of innovation and continuous improvement.

MAG of Life has always been inspired by the art of living well. Talal M. Al Gaddah, the founder and visionary behind the company has created a sanctuary of wellness and luxury, not in some far away sacred retreat, but rather in the city, and even closer, in your home where you can be nourished every day.

OUR COMMITMENT

Our primary focus is health, wellness and happiness since without it; one cannot enjoy the richness of life and vitality. As part of the innovative program, specific wellness features and technologies focus on what you breathe, what you see, what you consume and how you feel, to create an environment that is uniquely yours, yet optimized for health and wellbeing. This combined with a mindful approach to crafted quality of design and construction in pursuit of excellence only seen before in private palaces.

THE ARCHITECT

AMAR SABEH

Acclaimed French designer, curator and architect Amar Sabeh renowned for his creativity is a master of interpreting luxury in unique ways and has been instrumental in achieving the vision and completion of The Ritz Carlton Residences, Dubai, Creekside.

For The Residences, he has translated this spectacular space into breath-taking interiors and seamless design and wellness features that are still effortlessly human. Here, nature does not end, inside or out. The architecture and interior design of The Residences exude timeless modernity based on grand, elegant and light-filled spaces complimented by bespoke customized designer furniture.

Amar has partnered with DCC to bring his vision to life. Through their Innovative techniques, iconic designs, intricate details and highquality finishing: DCC has raised the bar in construction expertise and excellence in the Middle East.

PROPERTY MANAGEMENT

THE RITZ-CARLTON

The Ritz-Carlton has always been a name synonymous with distinction that continues to redefine luxury, through an incomparable commitment to the finest personal services and devotion to the standards that have made them the top luxury brand in the world.

Residence owners enjoy the same Legendary services as The Ritz-Carlton hotel guests and the added value of a dedicated Residence staff and private, owners-only amenities.

HEALTH & WELLNESS



Delos™ helps create spaces that actively contribute to human health, performance and well-being by marrying the best innovations in technology, health, science, and real estate. Combining the vision and philosophies of its parent companies, MAG of Life aims to provide Dubai a platform to improve human health and wellbeing by creating buildings that are developed with people's health and wellness at the centre of their design, supported by programming, aesthetics, consultation, research, and an array of innovative solutions and technologies.

Spaces that promote health, performance and wellbeing

CERTIFICATION



The International WELL Building Institute™ is the global wellness leader with a mission to enhance health and wellbeing in the spaces where we live, work, learn, and play. Built on a ground breaking collaboration between experts across building and health sciences, The International WELL Building Institute™ develops products, programs, and solutions that transform our environments into vehicles for health, wellbeing, performance, and resilience.



THE RITZ-CARLTON RESIDENCES

DUBAI, CREEKSIDE



*Click or Scan QR Code
for location on maps*

The Ritz-Carlton Residences, Dubai, Creekside
Sales Gallery, Podium Level
Gate Village 11, Dubai International Financial Centre (DIFC), Dubai

www.theresidencesdubaicreek.com
info@theresidencesdubaicreek.com

The Ritz-Carlton Residences, Dubai, Creekside are not owned, developed or sold by The Ritz-Carlton Hotel Company, L.L.C. or its affiliates ("Ritz-Carlton"). MAG of Life FZ-LLC uses The Ritz-Carlton marks under a license from Ritz-Carlton, which has not confirmed the accuracy of any of the statements or representations made herein.