

SEANENITY

K70 PALM JUMEIRAH



One of the world's most daring developments, the Palm Jumeirah in Dubai is a haven for vacationers. Jutting out into the Arabian Gulf, this artificial archipelago was built in the shape of a palm tree, with a 3-mile-long trunk and a fan of fronds lined with luxury villas and five-star hotels.



WANDER ALONG
AN EXCLUSIVE STRETCH OF
BEACH AND ENJOY THE SOFT
SANDS ON YOUR LEISURELY
STROLL.

AN ENDLESS SPACE FOR THE
UNIQUE SERENE STATE OF
MIND.

Everything Within Reach

- Dubai Marina — 10min
- Mall of the Emirates — 10min
- Mediclinic Park view Hospital — 15min
- Downtown Dubai — 15min
- Emirates Hills — 15min
- Business Bay — 20min
- DIFC — 20min
- Global Village — 25min

SEARENITY





SEARENITY
THE OASIS OF CHARM AND CALM
IN PALM

17,000+ SQ.FT.
PLOT SIZE

15,000+ SQ.FT.
BUILT UP AREA
+ INTERIORS

6+ Bedrooms

9+ Bathrooms

Sea views/Atlantis

PRICE: AED 130 MILLION

PAYMENT PLAN

Installment No.	Payment Milestone	Payment(%)
1	On Booking	30%
2	During Construction	40%
3	On Completion Date	30%
4	TOTAL	100%

Ground Floor

Double Height Lobby
Office
Formal Dining + Pantry
Informal Dining
Formal Living
Informal Living
Show Kitchen
Elevator
Lounge Bar
Formal Living
Casual Living
Dining
Double Sided Aquarium
Show Kitchen
Boh Kitchen
Powder Room
Car Showcase Garage
Spa
Gym
Steam Room
Internal Pool Lounge
Salon
Jacuzzi
Wine Cellar
Cinema Room
External Infinity Pool

First Floor

Masters Bedroom (Walk-In Closet)
His / Her Bathroom
Safe Room
4 Additional Bathroom
Master Suite
Guest Rooms
Balconies

Roof

Snack Bar
Roof Terrace
Infinity Pool
Sun Bath Deck
External Lounge
External Bar
DJ Area
Washroom
Sitting Area







GROUND FLOOR



Lobby



Lobby



THE ELEGANT
GRANDEUR OF SEARENITY



Lobby



Lobby Hall Way



Casual Lounge



Casual Lounge



Casual Lounge



Casual Lounge



Piano Display Hall



Formal Lounge



Formal Lounge



Dining Room



Dining Room



Dining Room



Dining Room



Kitchen



**UNWIND BY THE IMPRESSIVE
INFINITY POOL IN PALATIAL
SURROUNDING VIEWS OF THE
EXCEPTIONAL PALM JUMEIRAH**



Indoor Pool



Indoor Pool



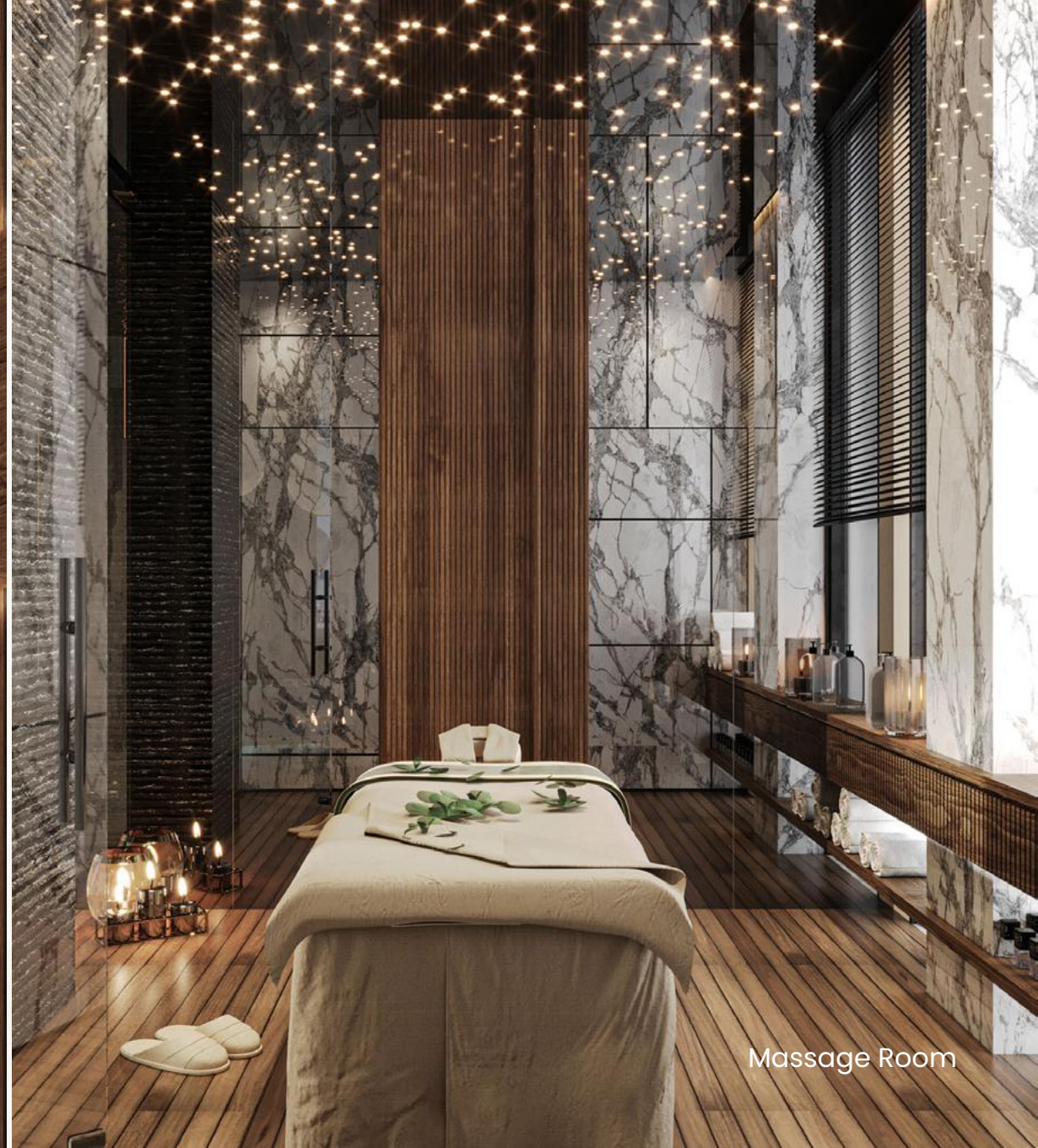
Indoor Pool



Indoor Pool



Sauna Room



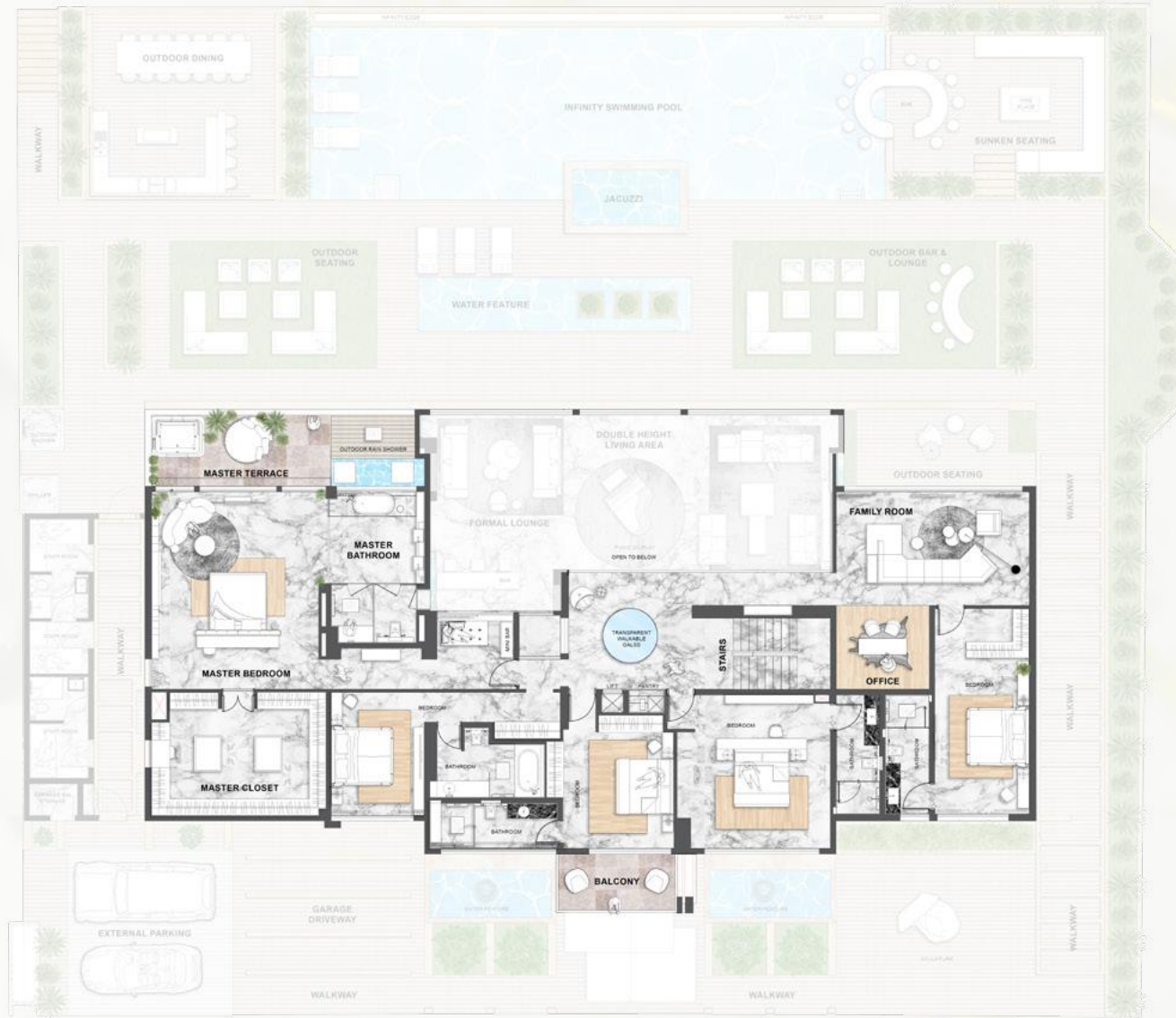
Massage Room



Spa Bathroom



Salon



FIRST FLOOR



Master Bedroom



Master Bedroom



Master Bedroom



Master Bedroom



Master Bathroom



Master Closet



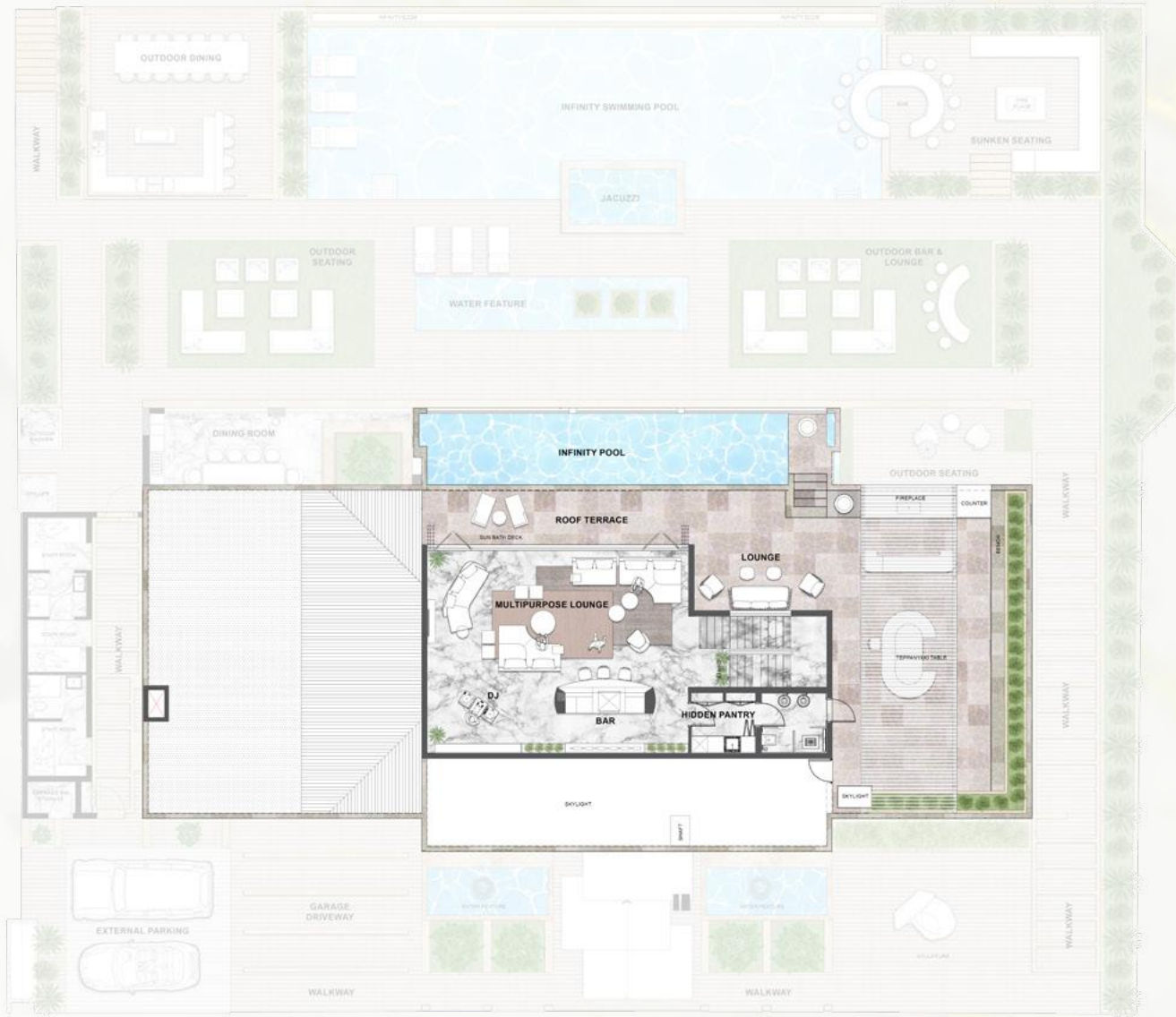
Master Closet



Family Room



Office



ROOF TOP



Lounge Bar



Lounge Bar



Lounge Bar



**SURROUNDED BY WORLD-FAMOUS
SAPPHIRE-HUED WATER, SEARENITY
IS THE BLISSFUL LUXURY VILLA
RETREAT.**



Outdoor Terrace



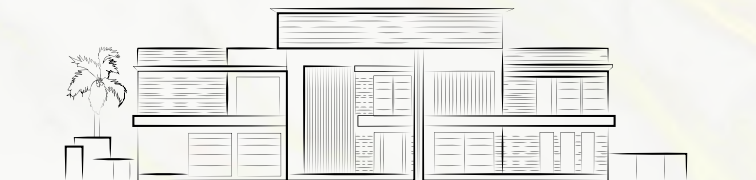
Outdoor Terrace



Outdoor Terrace



Outdoor Terrace




SEARENITY

K70 PALM JUMEIRAH



INFO@AHS-PROPERTIES.COM | +971 (4) 4581821

SALES CENTRE - AHS PROPERTIES, HAPPINESS STREET, CITY WALK – UNIT 2, BUILDING 5, DUBAI, UAE. P.O. BOX: 2195

 [AHS.PROPERTIES](https://www.instagram.com/AHS.PROPERTIES) | [AHS-PROPERTIES.COM](https://www.AHS-PROPERTIES.COM)