

1 BEDROOM – TYPE 1

Floor 1 to 7  
02 Series

HIGHLIGHTS

- 1 Bedroom
- 1 Bathroom
- Powder room
- Balcony

INTERNAL AREA

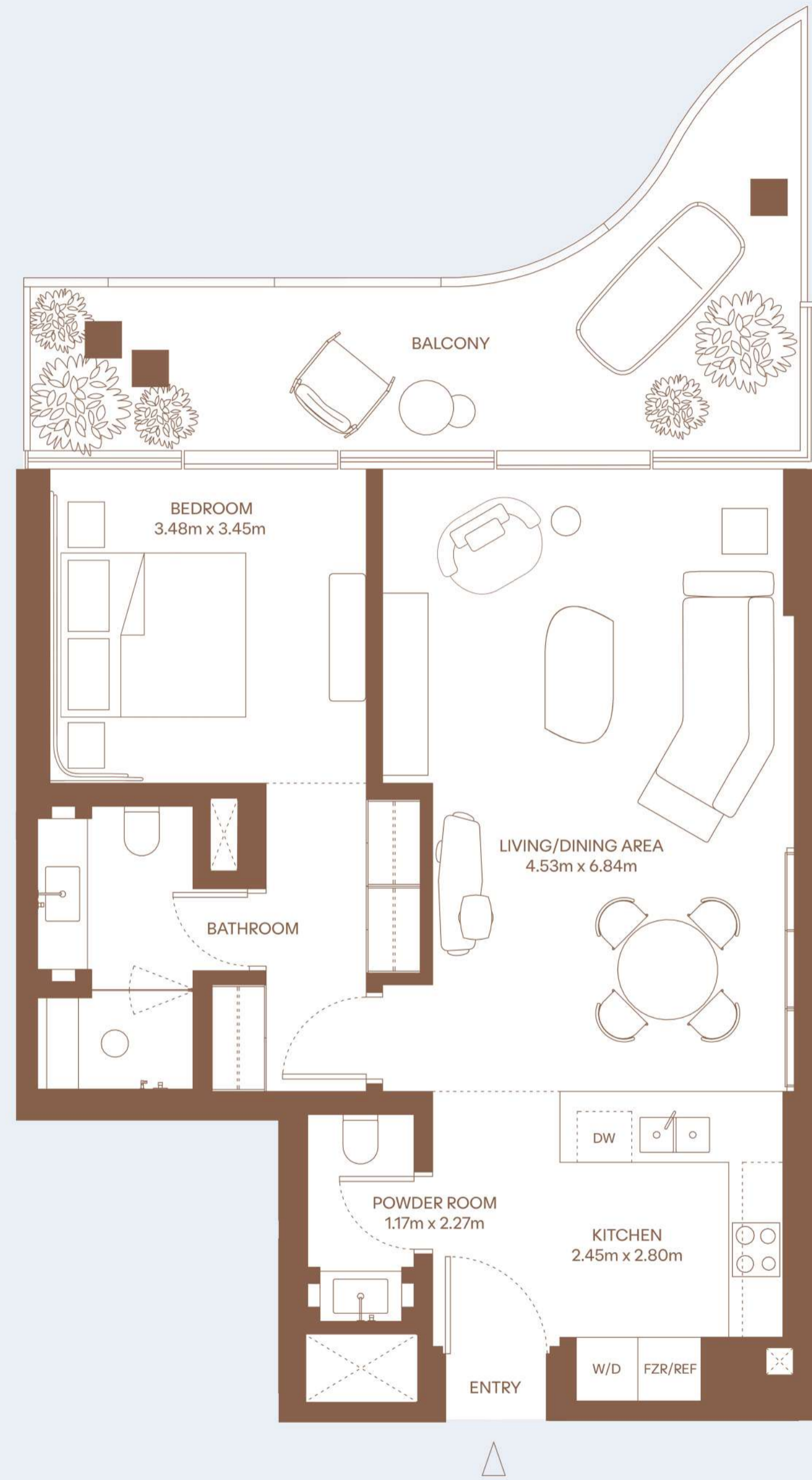
77 m<sup>2</sup> / 829 ft<sup>2</sup>

EXTERNAL AREA

21 m<sup>2</sup> / 226 ft<sup>2</sup>

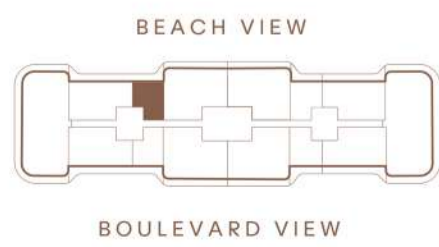
TOTAL AREA

98 m<sup>2</sup> / 1055 ft<sup>2</sup>



KEY PLAN

Building A



1 BEDROOM – TYPE 1

Floor 1 to 7  
06 Series

HIGHLIGHTS

1 Bedroom  
1 Bathroom  
Powder room  
Balcony

INTERNAL AREA

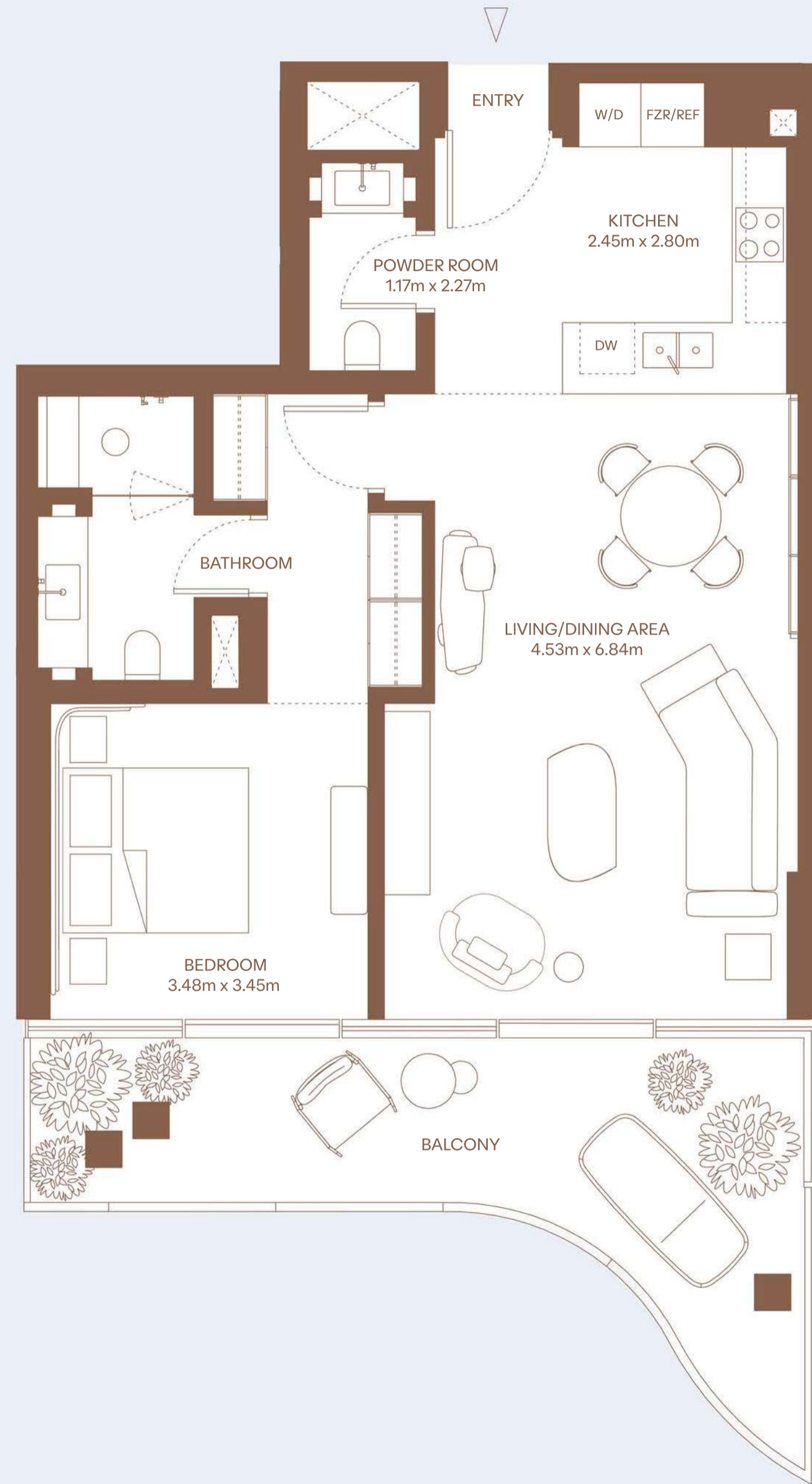
77 m<sup>2</sup> / 829 ft<sup>2</sup>

EXTERNAL AREA

21 m<sup>2</sup> / 226 ft<sup>2</sup>

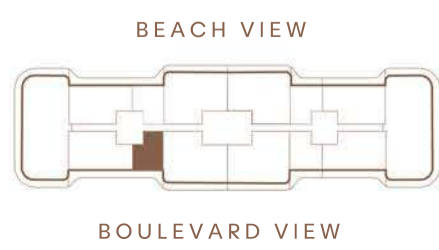
TOTAL AREA

98 m<sup>2</sup> / 1055 ft<sup>2</sup>



KEY PLAN

Building A



1 BEDROOM – TYPE 1

Floor 1 to 7  
09 Series

HIGHLIGHTS

1 Bedroom  
1 Bathroom  
Powder room  
Balcony

INTERNAL AREA

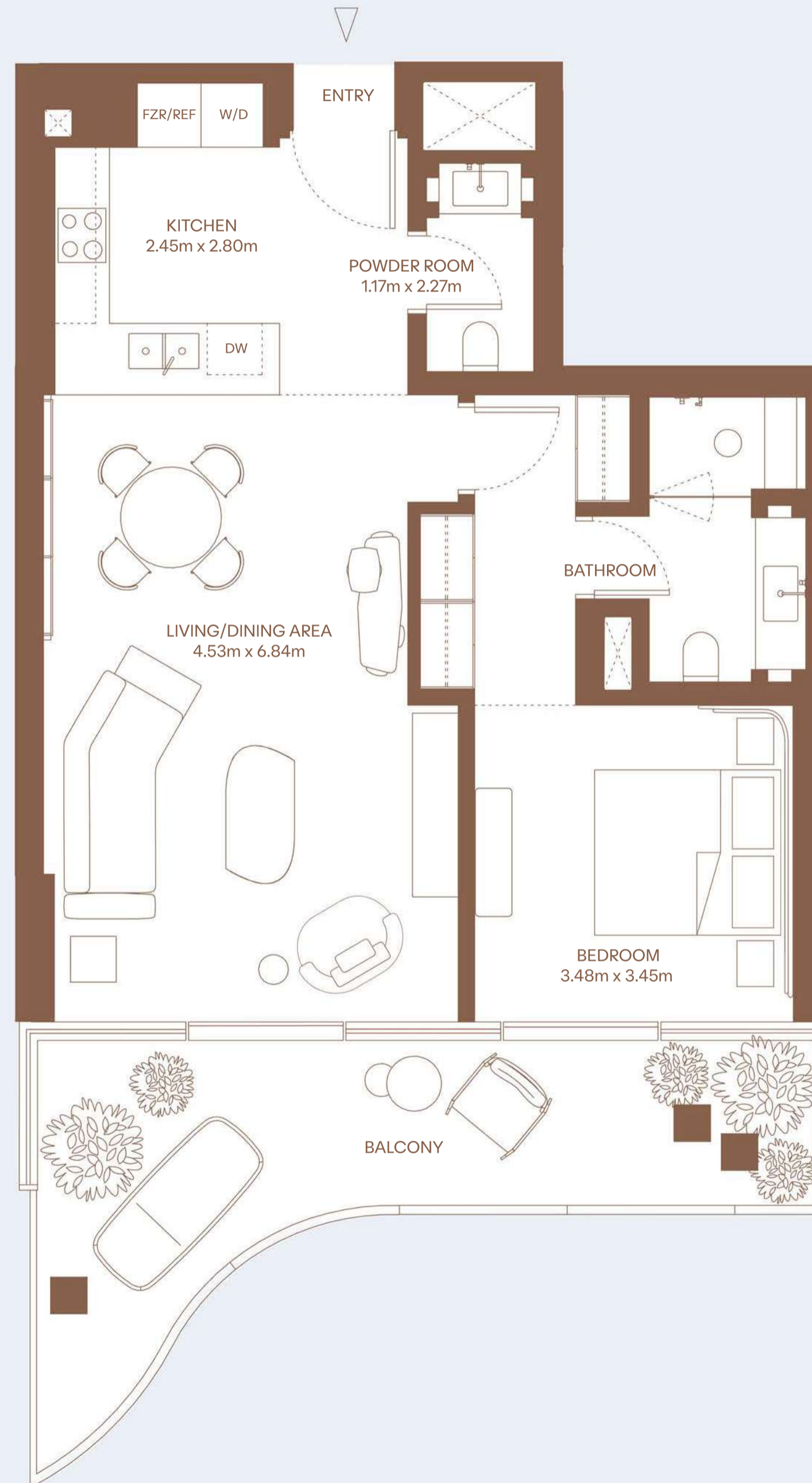
77 m<sup>2</sup> / 829 ft<sup>2</sup>

EXTERNAL AREA

21 m<sup>2</sup> / 226 ft<sup>2</sup>

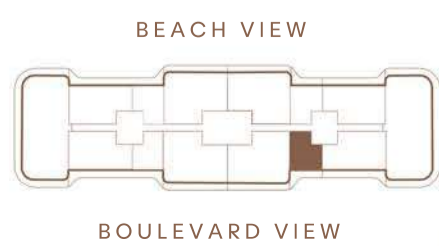
TOTAL AREA

98 m<sup>2</sup> / 1055 ft<sup>2</sup>



KEY PLAN

Building A



1 BEDROOM – TYPE 1

Floor 1 to 7  
13 Series

HIGHLIGHTS

- 1 Bedroom
- 1 Bathroom
- Powder room
- Balcony

INTERNAL AREA

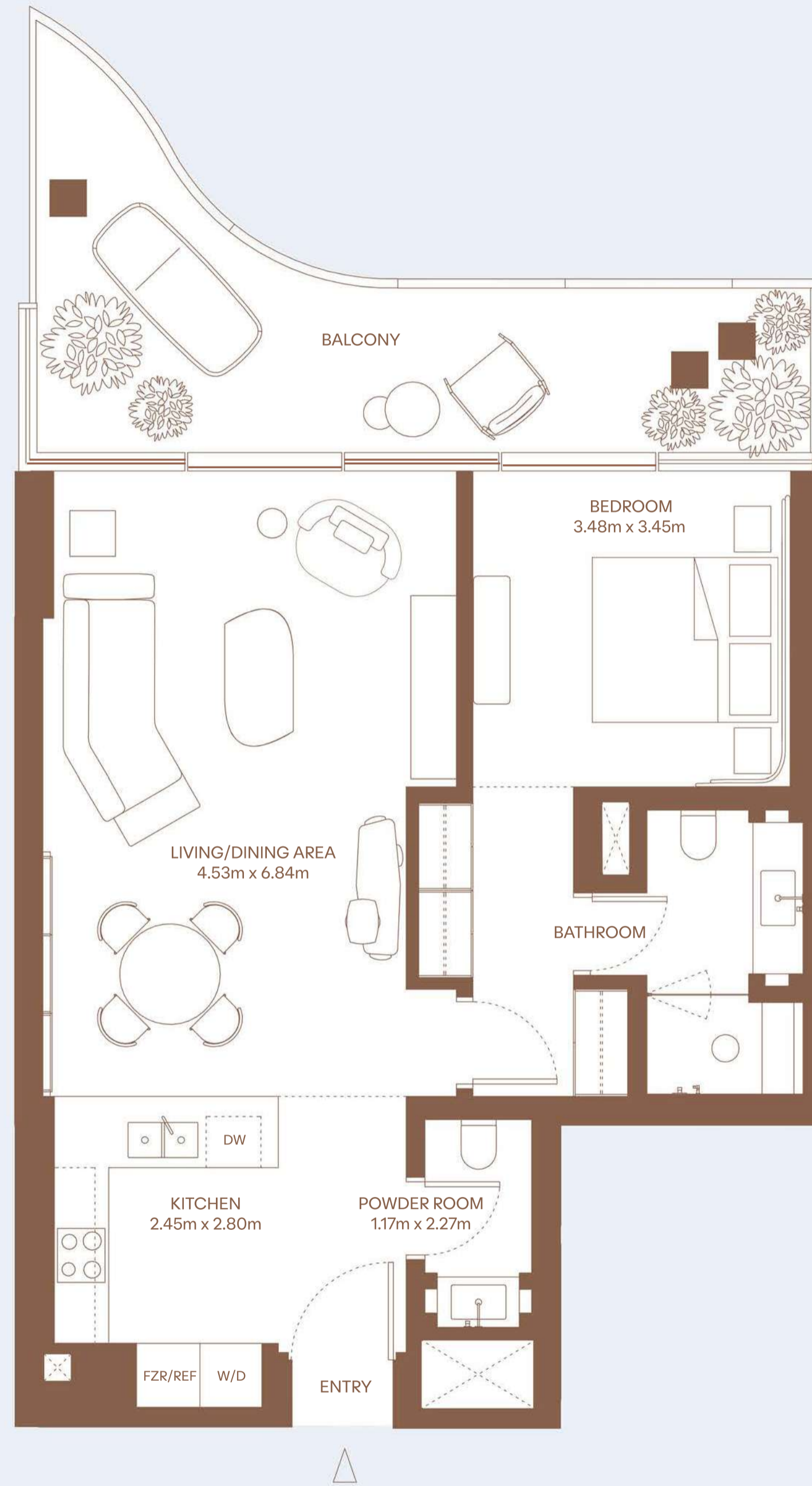
77 m<sup>2</sup> / 829 ft<sup>2</sup>

EXTERNAL AREA

21 m<sup>2</sup> / 226 ft<sup>2</sup>

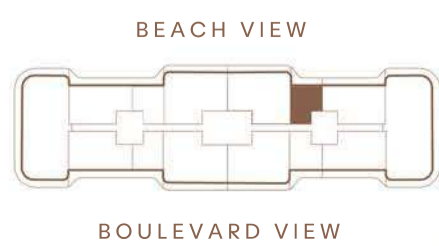
TOTAL AREA

98 m<sup>2</sup> / 1055 ft<sup>2</sup>



KEY PLAN

Building A



2 BEDROOM – TYPE 1

Floor 1 to 7  
03 Series

HIGHLIGHTS

- 2 Bedrooms
- 2 Bathrooms
- Powder room
- Balcony

INTERNAL AREA

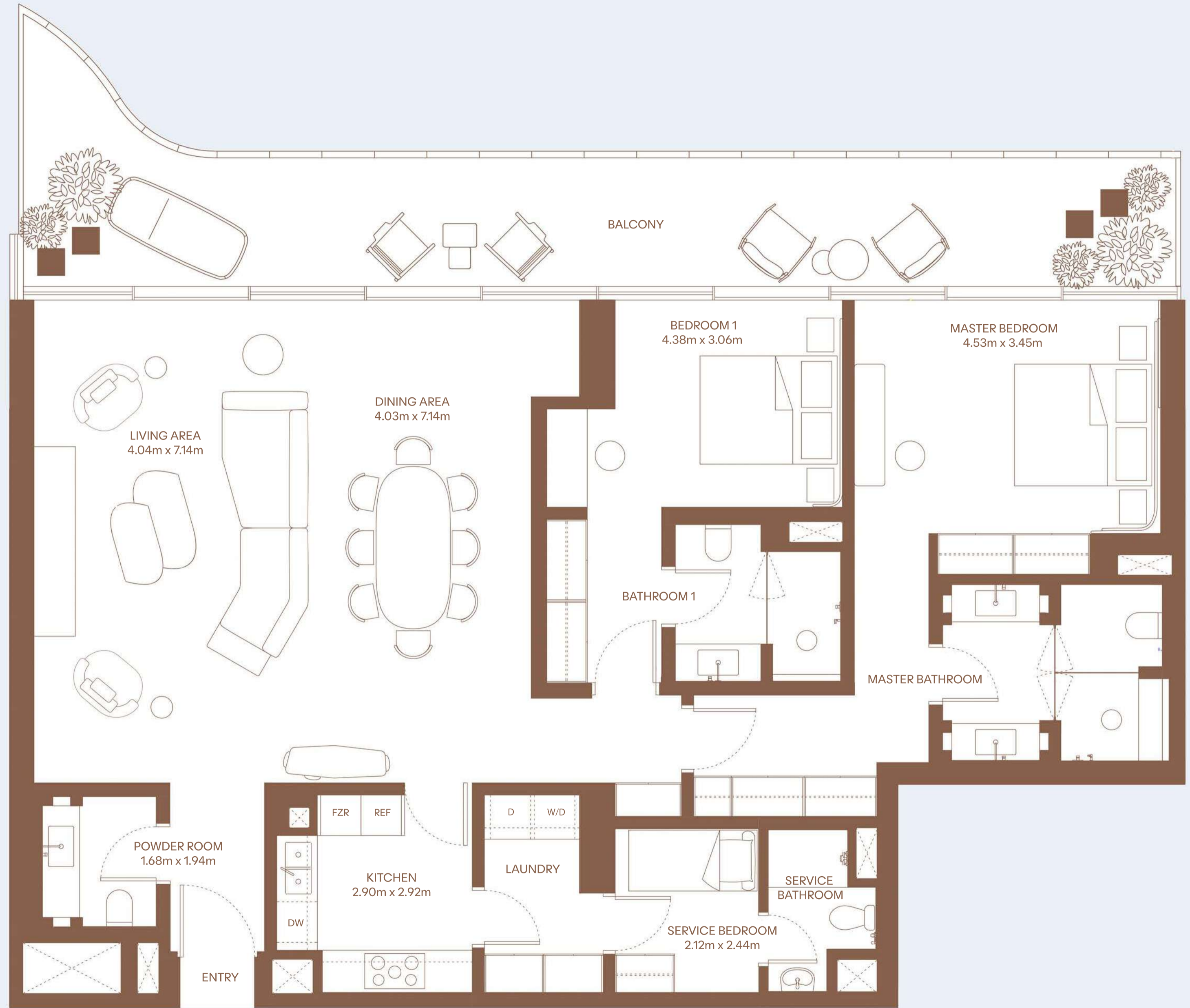
160 m<sup>2</sup> / 1722 ft<sup>2</sup>

EXTERNAL AREA

37 m<sup>2</sup> / 398 ft<sup>2</sup>

TOTAL AREA

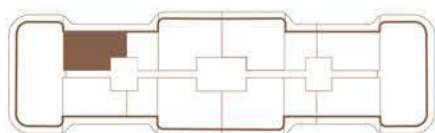
197 m<sup>2</sup> / 2120 ft<sup>2</sup>



KEY PLAN

Building A

BEACH VIEW



BOULEVARD VIEW



2 BEDROOM – TYPE 1

Floor 1 to 7  
05 Series

HIGHLIGHTS

- 2 Bedrooms
- 2 Bathrooms
- Powder room
- Balcony

INTERNAL AREA

160 m<sup>2</sup> / 1722 ft<sup>2</sup>

EXTERNAL AREA

37 m<sup>2</sup> / 398 ft<sup>2</sup>

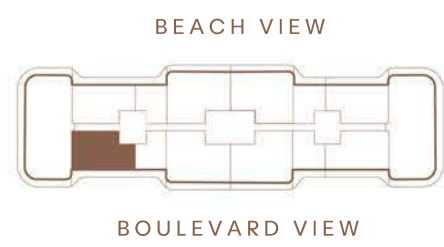
TOTAL AREA

197 m<sup>2</sup> / 2120 ft<sup>2</sup>



KEY PLAN

Building A



2 BEDROOM – TYPE 1

Floor 1 to 7  
10 Series

HIGHLIGHTS

- 2 Bedrooms
- 2 Bathrooms
- Powder room
- Balcony

INTERNAL AREA

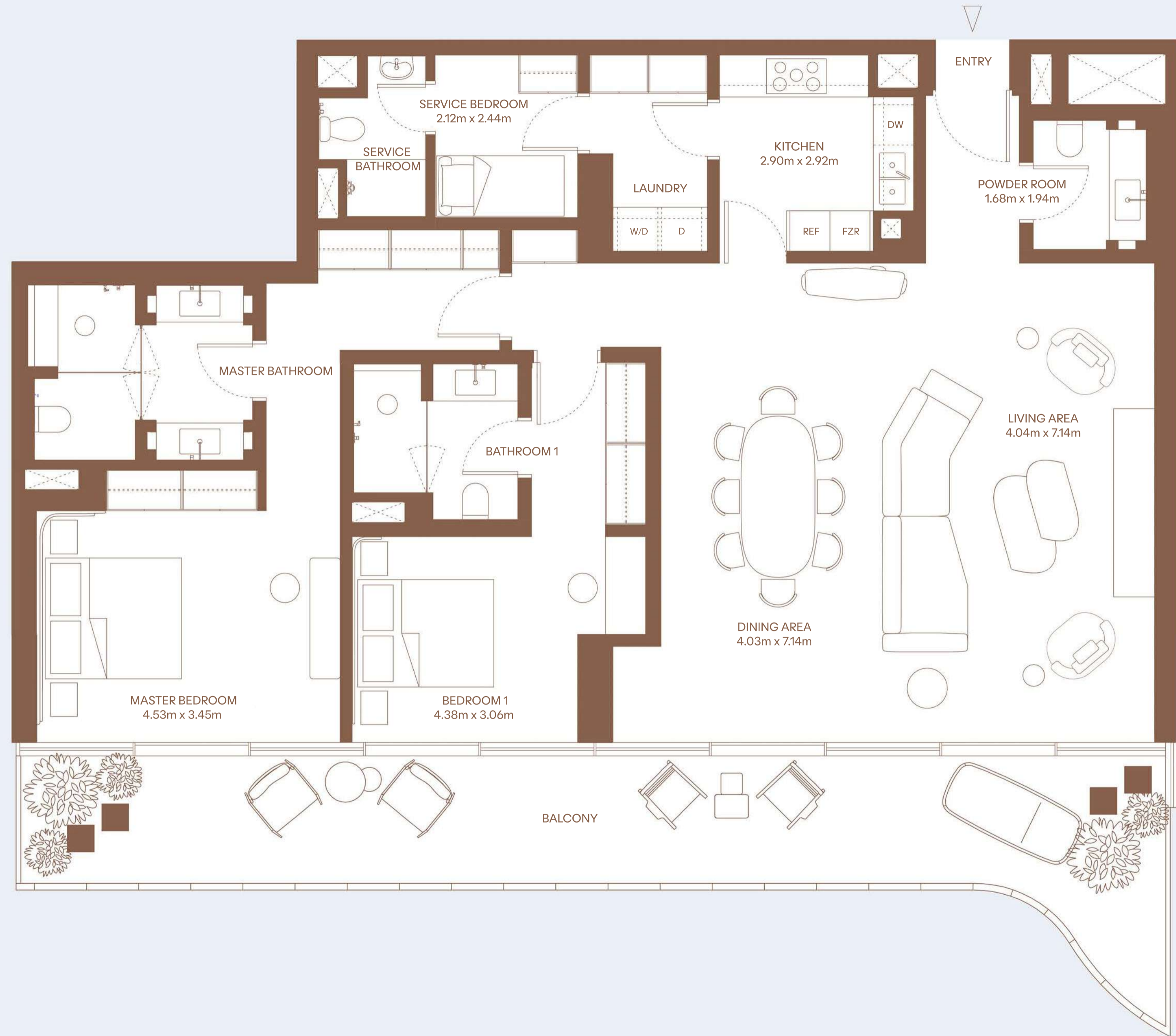
160 m<sup>2</sup> / 1722 ft<sup>2</sup>

EXTERNAL AREA

37 m<sup>2</sup> / 398 ft<sup>2</sup>

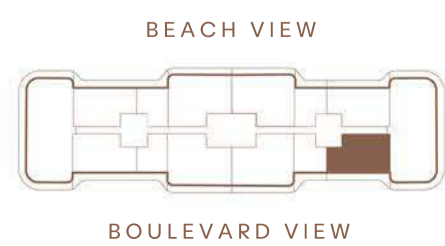
TOTAL AREA

197 m<sup>2</sup> / 2120 ft<sup>2</sup>



KEY PLAN

Building A



2 BEDROOM – TYPE 1

Floor 1 to 7  
12 Series

HIGHLIGHTS

- 2 Bedrooms
- 2 Bathrooms
- Powder room
- Balcony

INTERNAL AREA

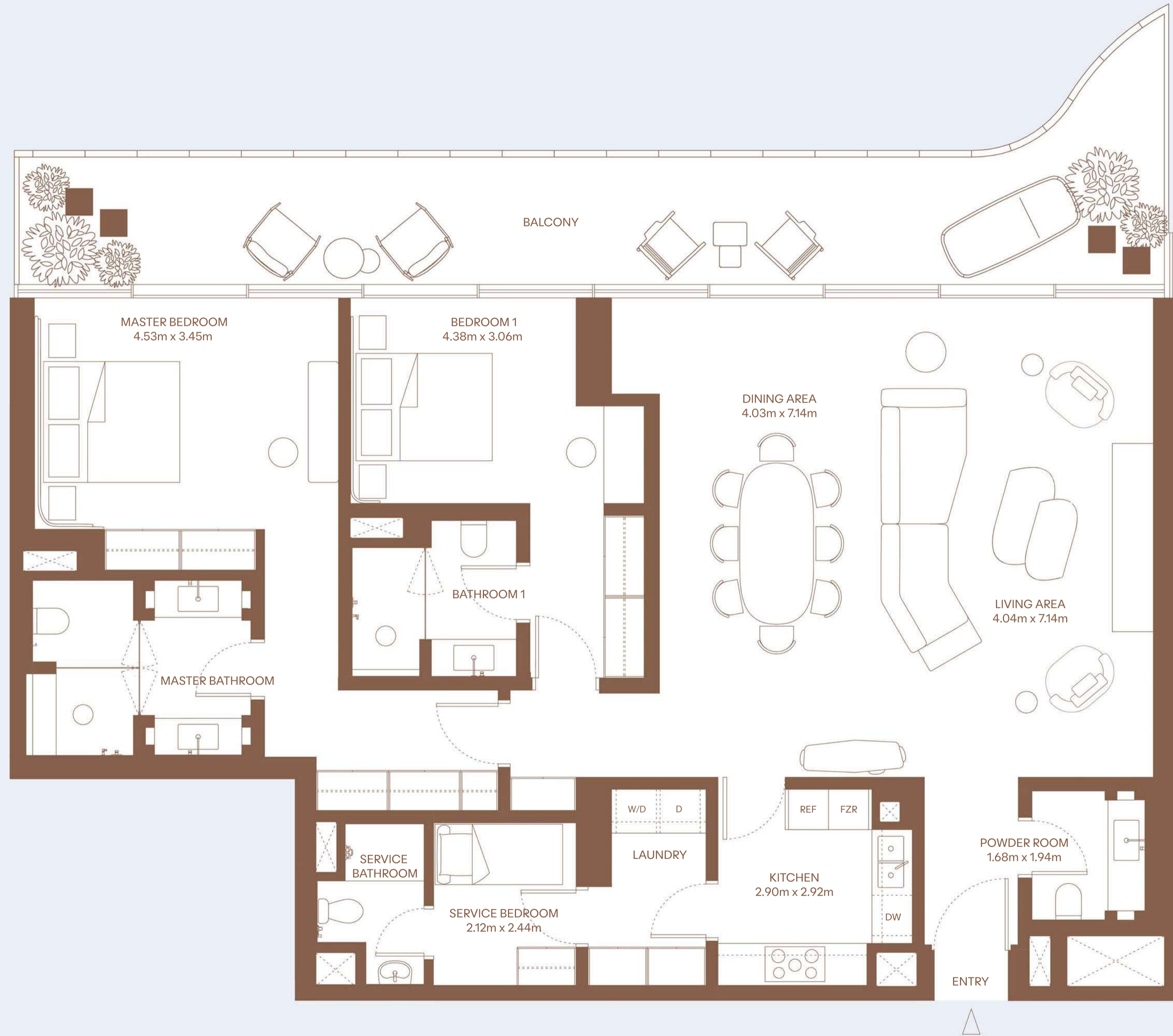
160 m<sup>2</sup> / 1722 ft<sup>2</sup>

EXTERNAL AREA

37 m<sup>2</sup> / 398 ft<sup>2</sup>

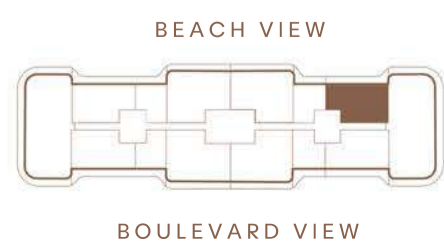
TOTAL AREA

197 m<sup>2</sup> / 2120 ft<sup>2</sup>



KEY PLAN

Building A





3 BEDROOM – TYPE 2

Floor 1 to 7  
01 Series

HIGHLIGHTS

- 3 Bedrooms
- 3 Bathrooms
- Powder room
- Balcony

INTERNAL AREA

209 m<sup>2</sup> / 2250 ft<sup>2</sup>

EXTERNAL AREA

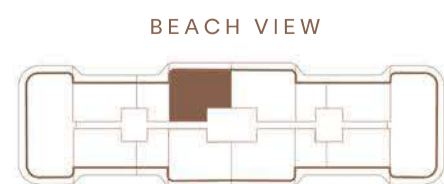
36 m<sup>2</sup> / 388 ft<sup>2</sup>

TOTAL AREA

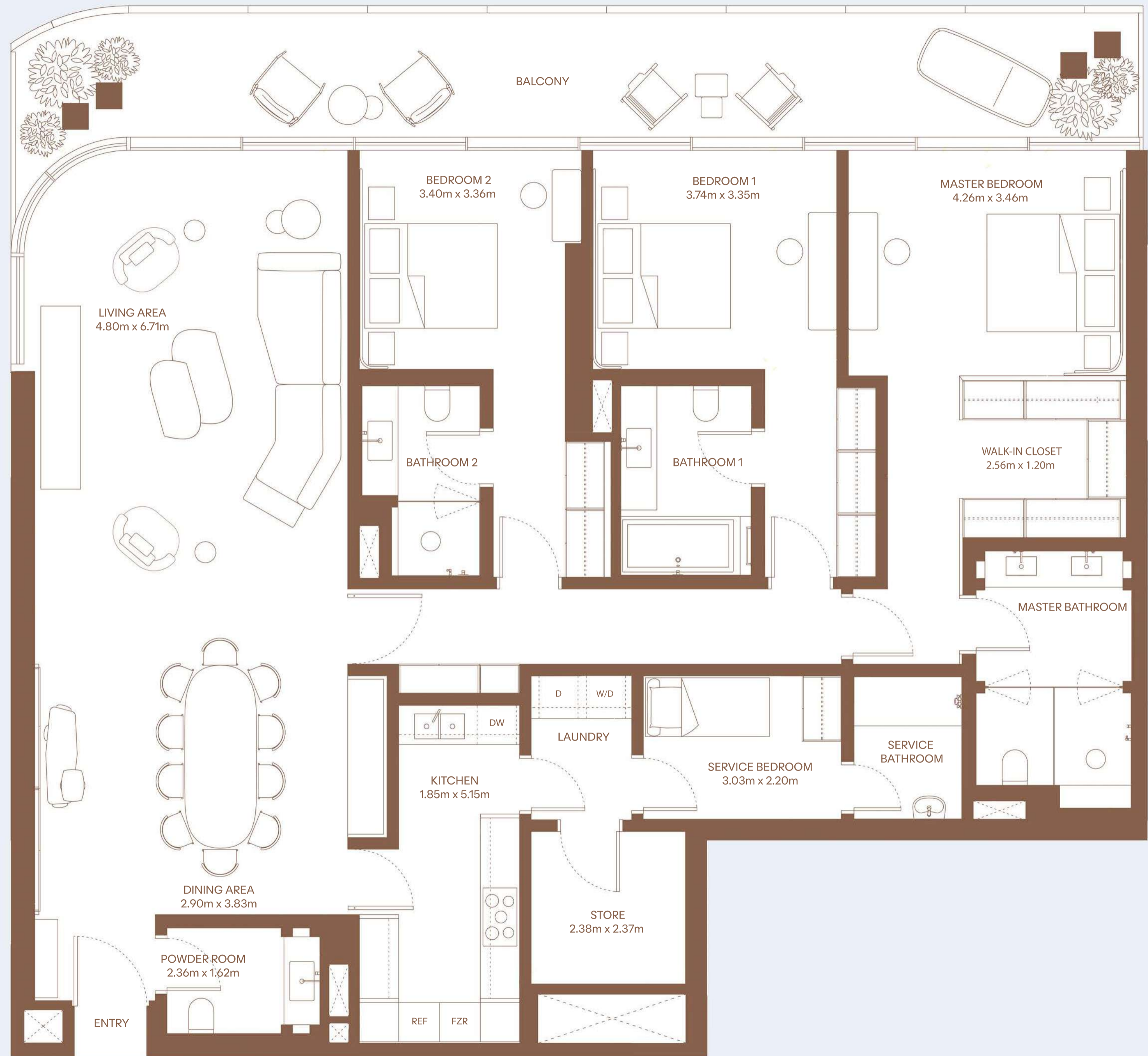
245 m<sup>2</sup> / 2638 ft<sup>2</sup>

KEY PLAN

Building A



BOULEVARD VIEW



3 BEDROOM – TYPE 2

Floor 1 to 7  
07 Series

HIGHLIGHTS

- 3 Bedrooms
- 3 Bathrooms
- Powder room
- Balcony

INTERNAL AREA

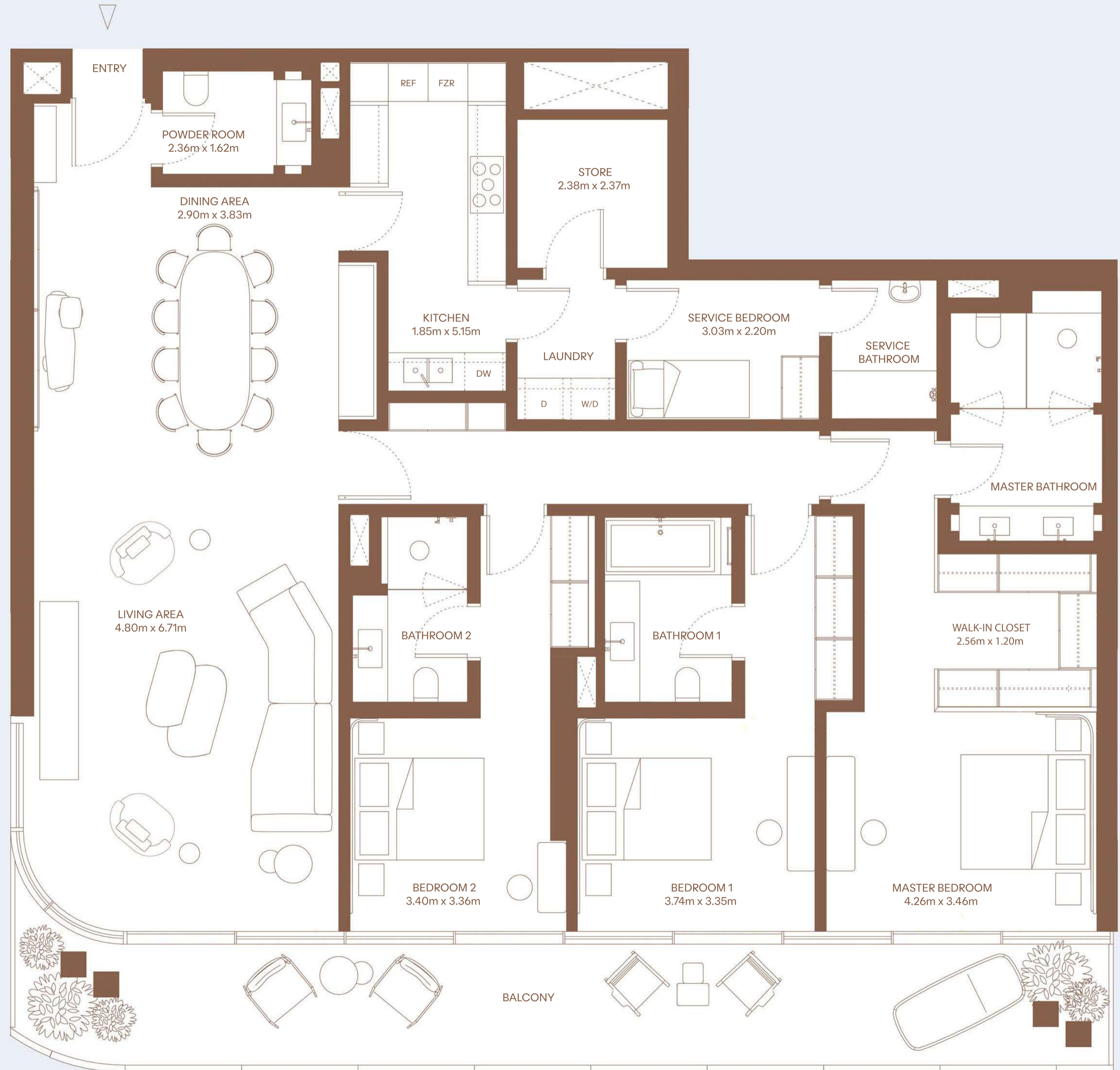
209 m<sup>2</sup> / 2250 ft<sup>2</sup>

EXTERNAL AREA

36 m<sup>2</sup> / 388 ft<sup>2</sup>

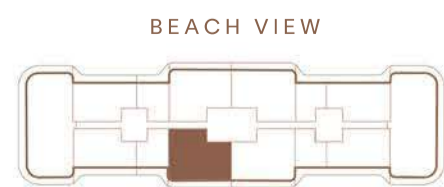
TOTAL AREA

245 m<sup>2</sup> / 2638 ft<sup>2</sup>



KEY PLAN

Building A



3 BEDROOM – TYPE 2

Floor 1 to 7  
08 Series

HIGHLIGHTS

- 3 Bedrooms
- 3 Bathrooms
- Powder room
- Balcony

INTERNAL AREA

209 m<sup>2</sup> / 2250 ft<sup>2</sup>

EXTERNAL AREA

36 m<sup>2</sup> / 388 ft<sup>2</sup>

TOTAL AREA

245 m<sup>2</sup> / 2638 ft<sup>2</sup>

KEY PLAN

Building A



3 BEDROOM – TYPE 2

Floor 1 to 7  
14 Series

HIGHLIGHTS

- 3 Bedrooms
- 3 Bathrooms
- Powder room
- Balcony

INTERNAL AREA

209 m<sup>2</sup> / 2250 ft<sup>2</sup>

EXTERNAL AREA

36 m<sup>2</sup> / 388 ft<sup>2</sup>

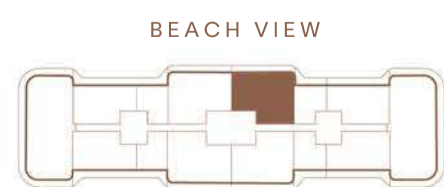
TOTAL AREA

245 m<sup>2</sup> / 2638 ft<sup>2</sup>



KEY PLAN

Building A



BOULEVARD VIEW



4 BEDROOM – TYPE 2

Floor 1 to 7  
04 Series

HIGHLIGHTS

- 4 Bedrooms
- 4 Bathrooms
- Powder room
- Balcony

INTERNAL AREA

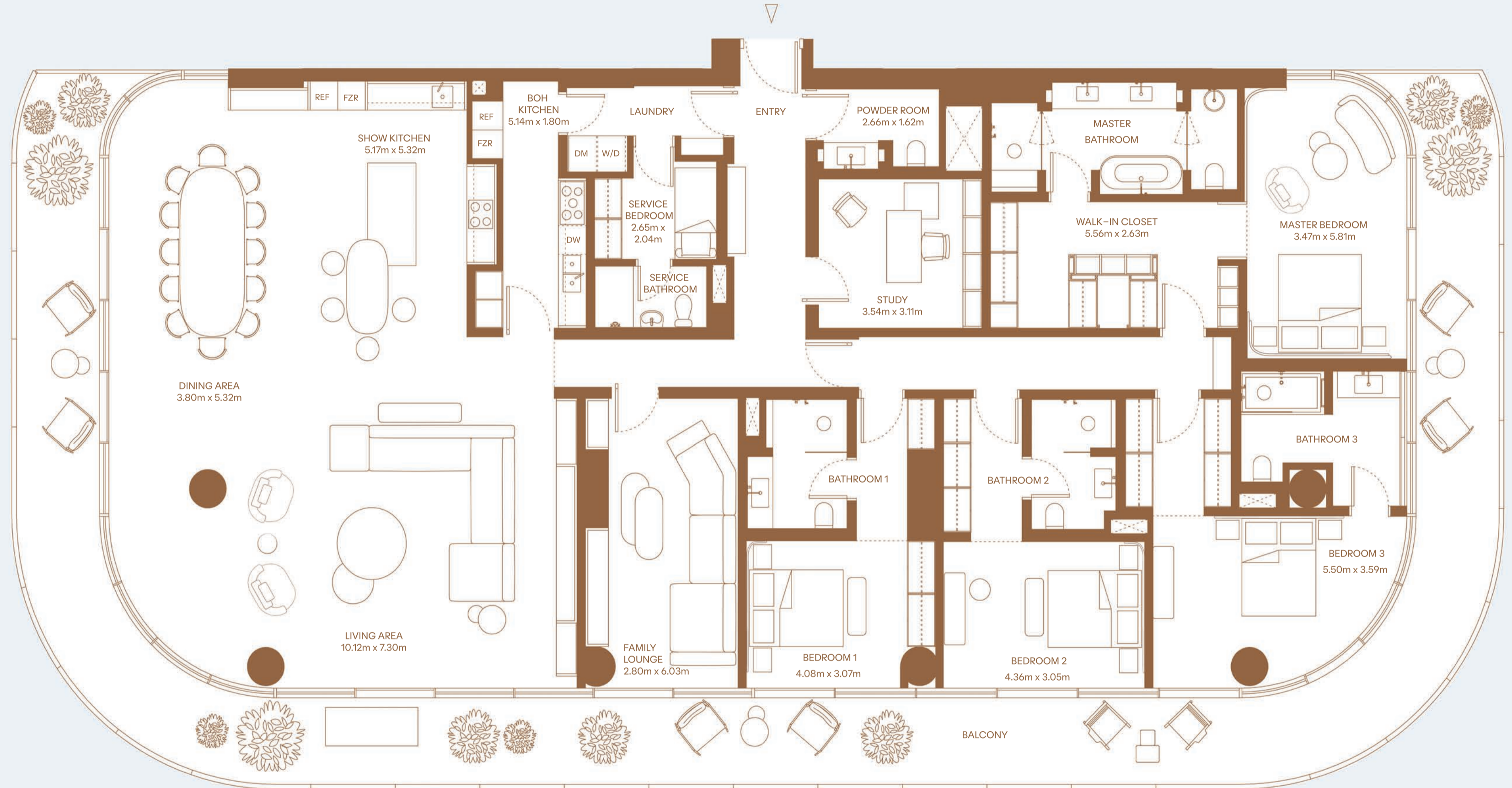
354 m<sup>2</sup> / 3810 ft<sup>2</sup>

EXTERNAL AREA

112 m<sup>2</sup> / 1206 ft<sup>2</sup>

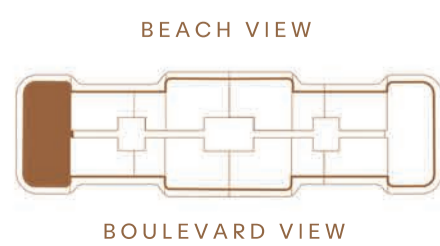
TOTAL AREA

466 m<sup>2</sup> / 5016 ft<sup>2</sup>



KEY PLAN

Building A



4 BEDROOM – TYPE 2

Floor 1 to 7  
11 Series

HIGHLIGHTS

- 4 Bedrooms
- 4 Bathrooms
- Powder room
- Balcony

INTERNAL AREA

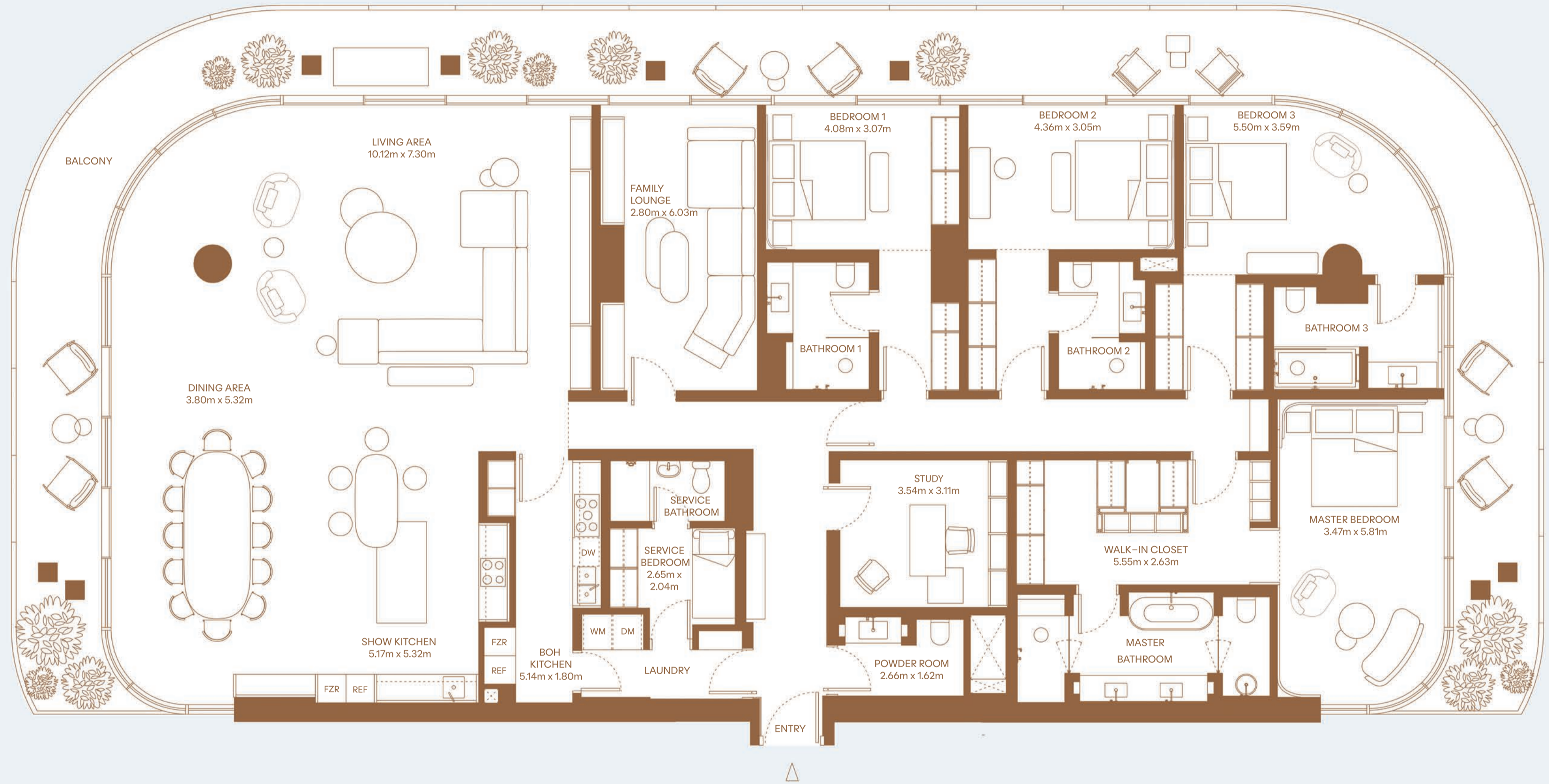
354 m<sup>2</sup> / 3810 ft<sup>2</sup>

EXTERNAL AREA

112 m<sup>2</sup> / 1206 ft<sup>2</sup>

TOTAL AREA

466 m<sup>2</sup> / 5016 ft<sup>2</sup>



KEY PLAN

Building A

