

club place

DUBAI HILLS ESTATE



DUBAI HILLS ESTATE

Dubai Hills Estate – the green heart of Dubai – is a first-of-its-kind destination. This masterfully planned, multi-purpose development forms an integral part of the Mohammed Bin Rashid City. Strategically situated between Downtown Dubai and Dubai Marina, flanked by Al Khail Road, the community offers easy access to the city's most popular districts and attractions.



Modern Living by the Fairways

Find your sanctuary where luxury meets nature. Club Place's stunning towers offer a perfect blend of elegance and tranquillity in Dubai Hills Estate. Experience the scenic surroundings of a world-class golf course, a short stroll from Dubai Hills Park, and moments from the bustling Dubai Hills Mall.



Premium Residences

Spacious 1, 2 and 3 bedroom apartments thoughtfully designed for the modern individual. Every home offers panoramic views, modern amenities, and sophisticated finishes.



Apartments	Units	Min. Area (sq. ft.)	Max. Area (sq. ft.)	Starting Price (in AED Mn)
1-Bedroom	234	693	902	1.45 Mn
2-Bedroom	164	1,085	1,572	2.23 Mn
3-Bedroom	75	1,551	1,931	3.40 Mn



Payment Plan

Instalment	Payment Percentage	Date
Down Payment	10%	JUL 2024
1st Instalment	10%	SEP 2024
2nd Instalment	10%	FEB 2025
3th Instalment	10%	JUL 2025
4th Instalment 20% Construction Completion	10%	APR 2026
5th Instalment 40% Construction Completion	10%	NOV 2026
6th Instalment 60% Construction Completion	10%	JUN 2027
7th Instalment 80% Construction Completion	10%	JAN 2028
8th Instalment 100% Construction Completion	20%	DEC 2028

Floor Plans

1 Bedroom Building A

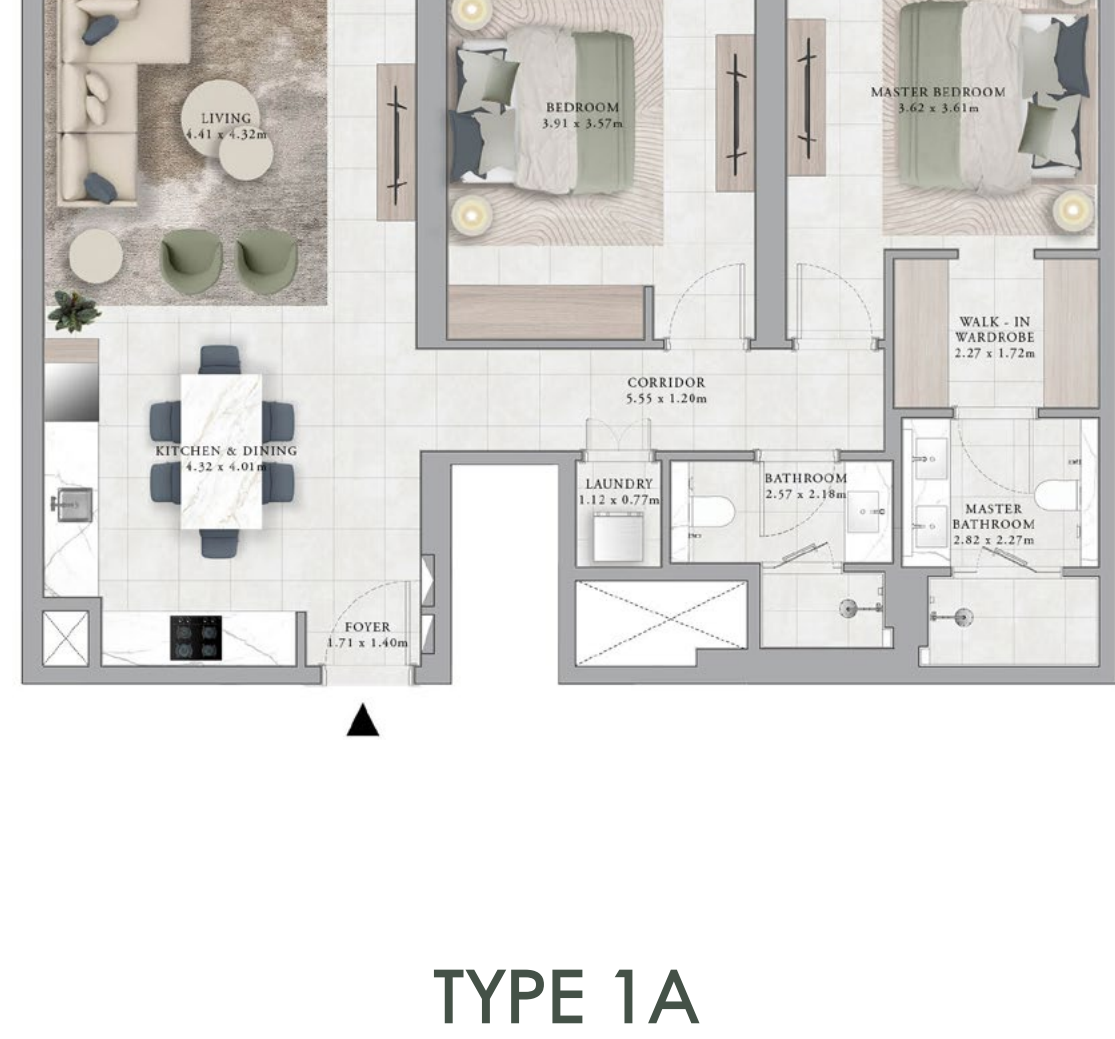


TYPE 1A



TYPE 2A

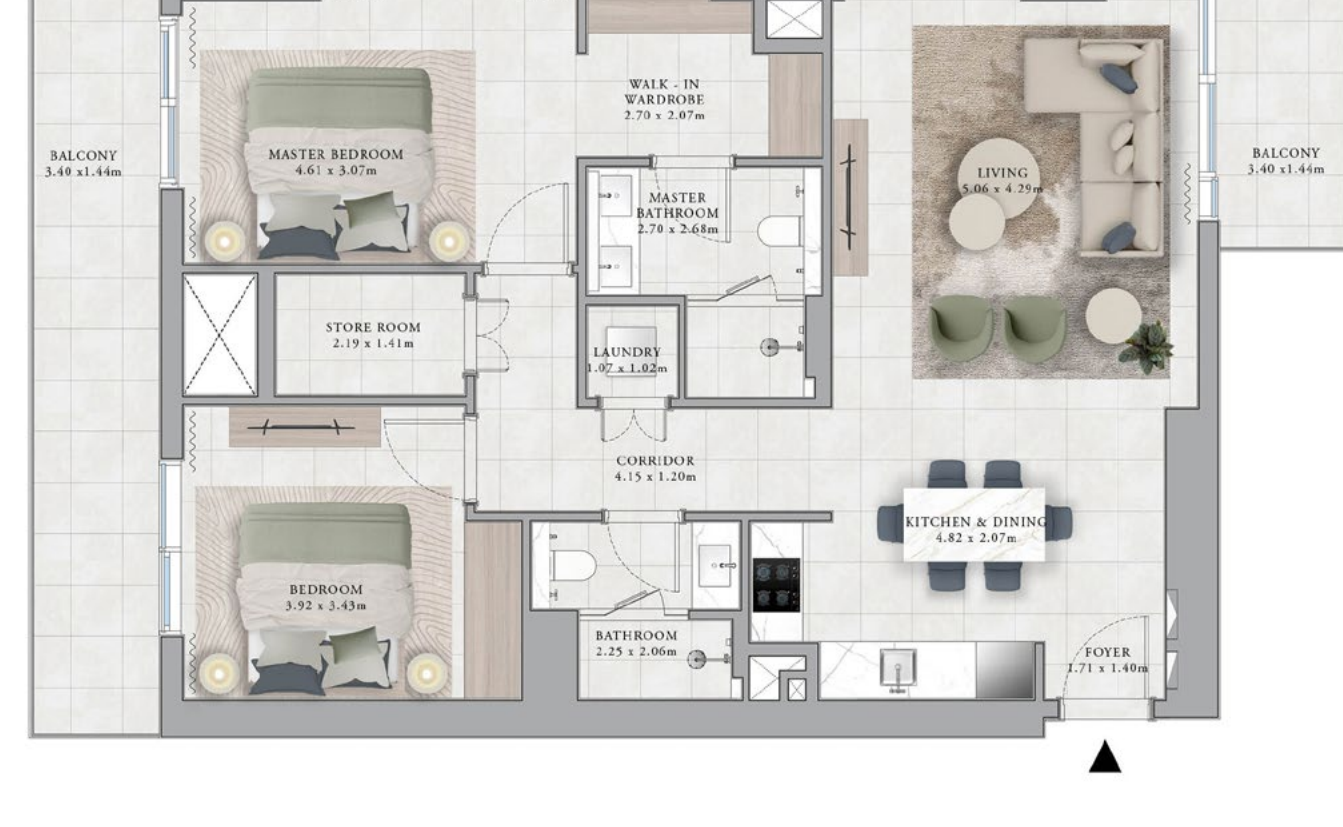
2 Bedroom Building A



TYPE 1A



TYPE 2A



TYPE 2E

3 Bedroom Building A



TYPE 1A



TYPE 1B

1 Bedroom Building B



TYPE 3A



TYPE 3B



TYPE 4A



TYPE 5A

2 Bedroom Building B



TYPE 3A

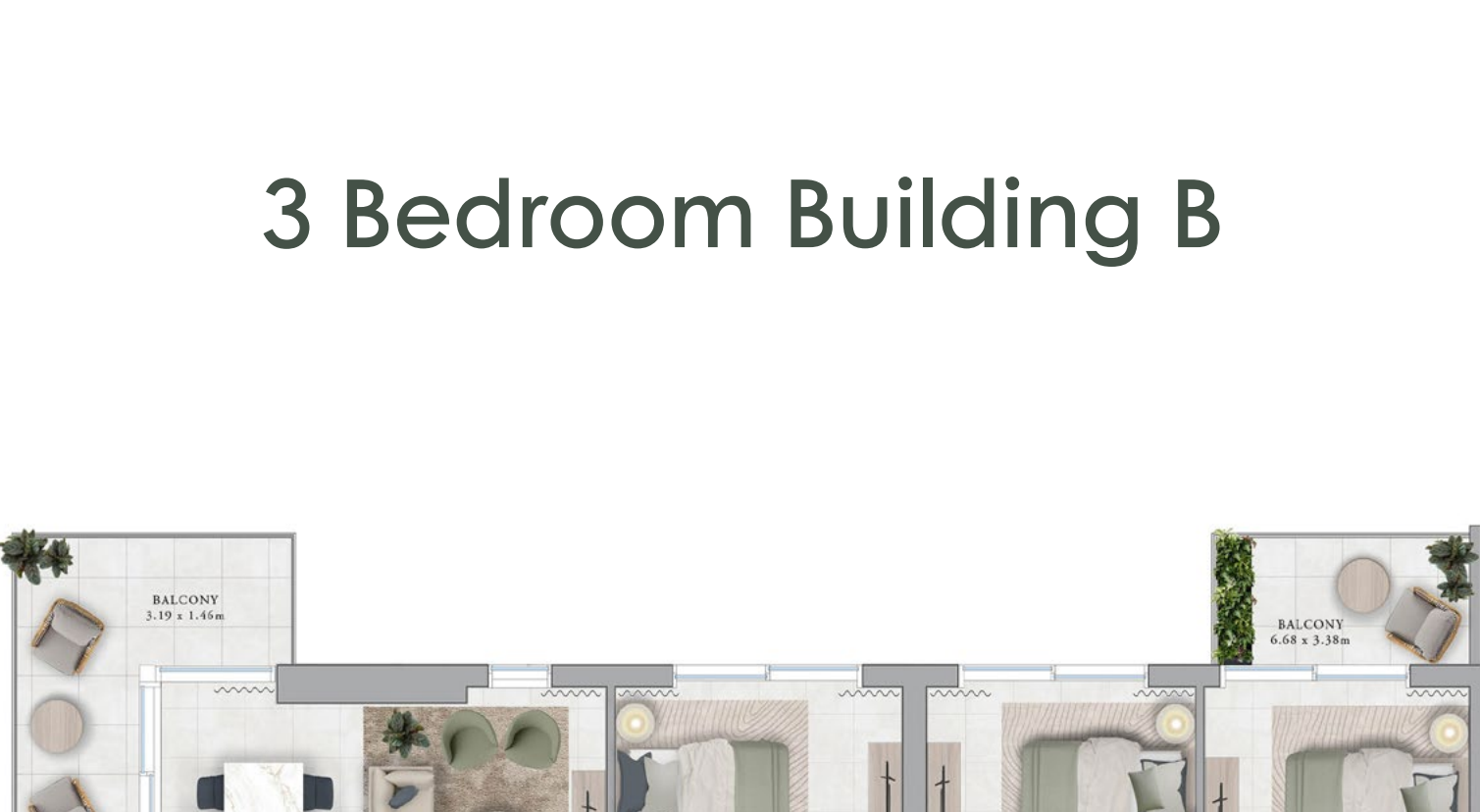


TYPE 4A



TYPE 5B

3 Bedroom Building B

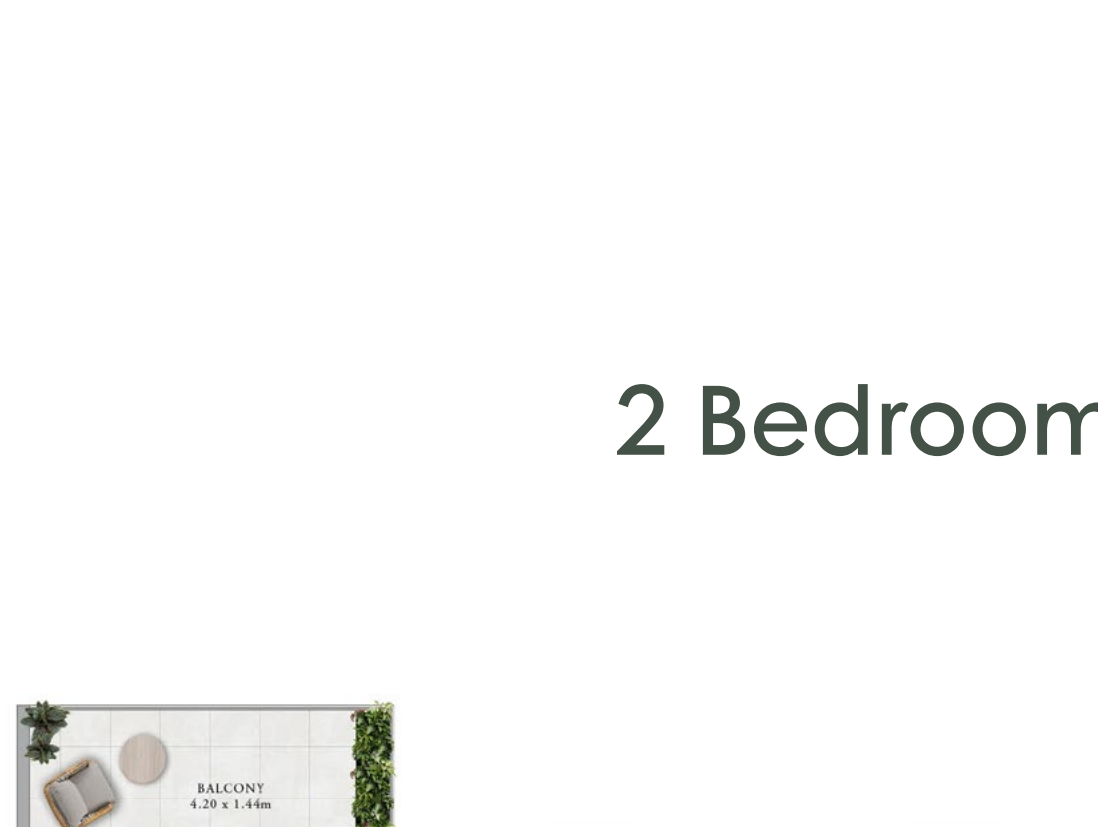


TYPE 3A

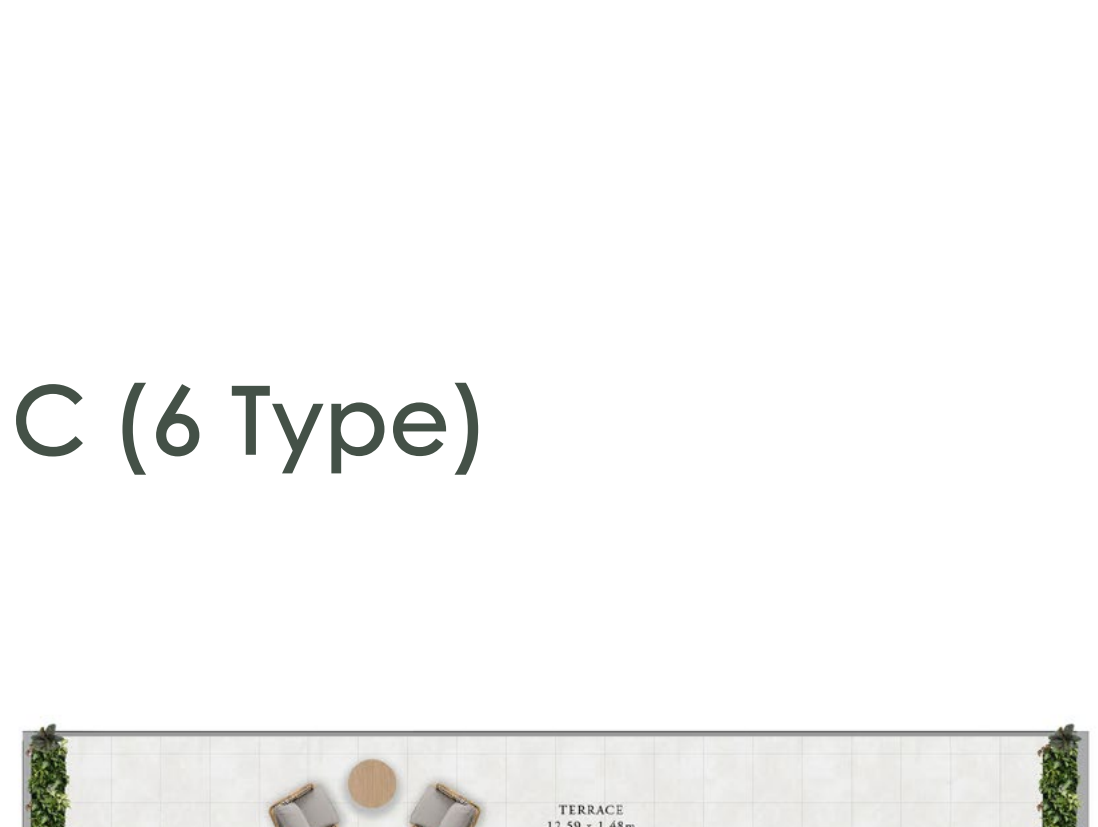


TYPE 4A

2 Bedroom Building C (6 Type)



TYPE 6A



TYPE 6C